

---

**Product Name: FGFR-3 Rabbit Polyclonal Antibody****Catalog #: APRab10948**

For research use only.

**Summary**

<b>Description</b>	Rabbit polyclonal Antibody
<b>Host</b>	Rabbit
<b>Application</b>	WB,IHC,ICC/IF,ELISA
<b>Reactivity</b>	Human,Mouse,Rat
<b>Conjugation</b>	Unconjugated
<b>Modification</b>	Unmodified
<b>Isotype</b>	IgG
<b>Clonality</b>	Polyclonal
<b>Form</b>	Liquid
<b>Concentration</b>	1mg/ml
<b>Storage</b>	Aliquot and store at -20°C (valid for 12 months). Avoid freeze/thaw cycles.
<b>Shipping</b>	Ice bags
<b>Buffer</b>	Liquid in PBS containing 50% glycerol, 0.5% protective protein and 0.02% New type preservative N.
<b>Purification</b>	Affinity purification

**Application**

<b>Dilution Ratio</b>	WB 1:500-1:2000,IHC 1:100-1:300,ICC/IF 1:50-1:200,ELISA 1:5000-1:20000
<b>Molecular Weight</b>	95-130kDa

**Antigen Information**

<b>Gene Name</b>	FGFR3
<b>Alternative Names</b>	FGFR3; JTK4; Fibroblast growth factor receptor 3; FGFR-3; CD antigen CD333
<b>Gene ID</b>	2261.0
<b>SwissProt ID</b>	P22607
<b>Immunogen</b>	The antiserum was produced against synthesized peptide derived from human FGFR3. AA range:131-180

**Background**

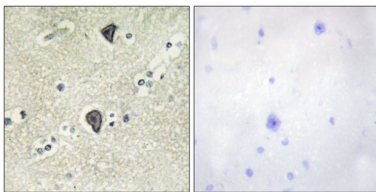
This gene encodes a member of the fibroblast growth factor receptor (FGFR) family, with its amino acid sequence being highly

conserved between members and among divergent species. FGFR family members differ from one another in their ligand affinities and tissue distribution. A full-length representative protein would consist of an extracellular region, composed of three immunoglobulin-like domains, a single hydrophobic membrane-spanning segment and a cytoplasmic tyrosine kinase domain. The extracellular portion of the protein interacts with fibroblast growth factors, setting in motion a cascade of downstream signals, ultimately influencing mitogenesis and differentiation. This particular family member binds acidic and basic fibroblast growth hormone and plays a role in bone development and maintenance. Mutations in this gene lead to craniosynostosis and multiple types of skeletal dyscatalytic activity:ATP + a [protein]-L-tyrosine = ADP + a [protein]-L-tyrosine phosphate.,disease:A chromosomal aberration involving FGFR3 may be a cause of multiple myeloma (MM) [MIM:254500]. Translocation t(4;14)(p16.3;q32.3) with the IgH locus.,disease:Defects in FGFR3 are a cause of bladder cancer [MIM:109800]. Somatic mutations can constitutively activate FGFR3.

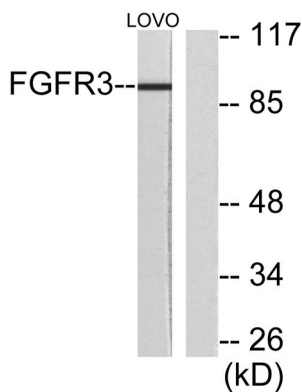
## Research Area

MAPK\_ERK\_Growth;MAPK\_G\_Protein;Endocytosis;Regulates Actin and Cytoskeleton;Pathways in cancer;Bladder cancer;

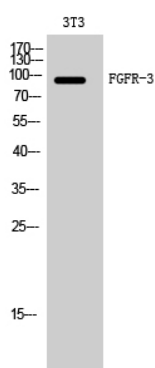
## Image Data



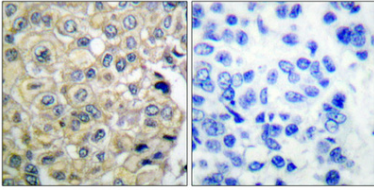
Immunohistochemistry analysis of paraffin-embedded human brain tissue, using FGFR3 Antibody. The picture on the right is blocked with the synthesized peptide.



Western blot analysis of lysates from LOVO cells, using FGFR3 Antibody. The lane on the right is blocked with the synthesized peptide.



Western Blot analysis of 3T3 cells using FGFR-3 Polyclonal Antibody diluted at 1 : 500



Immunohistochemical analysis of paraffin-embedded Human breast cancer. Antibody was diluted at 1:100 (4°,overnight) . High-pressure and temperature Tris-EDTA,pH8.0 was used for antigen retrieval. Negative contrl (right) obtaned from antibody was pre-absorbed by immunogen peptide.