

**Product Name: FAT10 Rabbit Polyclonal Antibody****Catalog #: APRab10846**

For research use only.

**Summary**

<b>Description</b>	Rabbit polyclonal Antibody
<b>Host</b>	Rabbit
<b>Application</b>	WB,ELISA
<b>Reactivity</b>	Human,Rat,Mouse
<b>Conjugation</b>	Unconjugated
<b>Modification</b>	Unmodified
<b>Isotype</b>	IgG
<b>Clonality</b>	Polyclonal
<b>Form</b>	Liquid
<b>Concentration</b>	1mg/ml
<b>Storage</b>	Aliquot and store at -20°C (valid for 12 months). Avoid freeze/thaw cycles.
<b>Shipping</b>	Ice bags
<b>Buffer</b>	Liquid in PBS containing 50% glycerol, 0.5% protective protein and 0.02% New type preservative N.
<b>Purification</b>	Affinity purification

**Application**

<b>Dilution Ratio</b>	WB 1:500-1:2000,ELISA 1:5000-1:20000
<b>Molecular Weight</b>	18kDa

**Antigen Information**

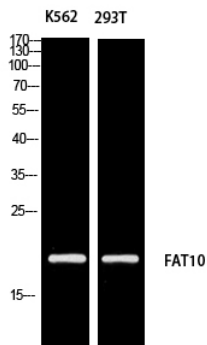
<b>Gene Name</b>	UBD
<b>Alternative Names</b>	UBD; FAT10; Ubiquitin D; Diubiquitin; Ubiquitin-like protein FAT10
<b>Gene ID</b>	10537.0
<b>SwissProt ID</b>	O15205
<b>Immunogen</b>	Synthesized peptide derived from the Internal region of human FAT10.

**Background**

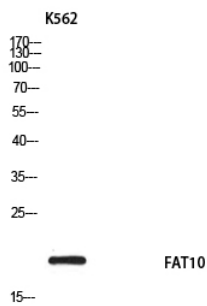
similarity:Contains 2 ubiquitin-like domains.,subunit:Interacts with MAD2.,similarity:Contains 2 ubiquitin-like domains.,subunit:Interacts with MAD2.,

## Research Area

### Image Data



Western blot analysis of K562 293T using FAT10 antibody. Antibody was diluted at 1:1000. Secondary antibody was diluted at 1:20000



Western blot analysis of K562 using FAT10 antibody. Antibody was diluted at 1:1000. Secondary antibody was diluted at 1:20000