
Product Name: FAM80A Rabbit Polyclonal Antibody**Catalog #: APRab10819**

For research use only.

Summary

Description	Rabbit polyclonal Antibody
Host	Rabbit
Application	WB,ELISA
Reactivity	Human,Mouse,Monkey
Conjugation	Unconjugated
Modification	Unmodified
Isotype	IgG
Clonality	Polyclonal
Form	Liquid
Concentration	1mg/ml
Storage	Aliquot and store at -20°C (valid for 12 months). Avoid freeze/thaw cycles.
Shipping	Ice bags
Buffer	Liquid in PBS containing 50% glycerol, 0.5% protective protein and 0.02% New type preservative N.
Purification	Affinity purification

Application

Dilution Ratio	WB 1:500-1:2000,ELISA 1:10000-1:20000
Molecular Weight	43kDa

Antigen Information

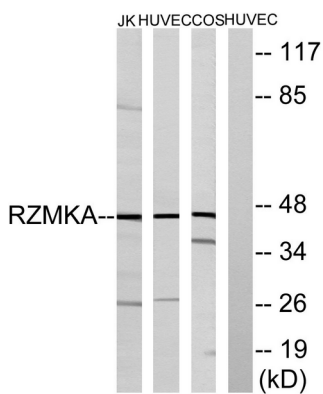
Gene Name	RIMKLA
Alternative Names	RIMKLA; FAM80A; N-acetylaspartyl-glutamate synthetase A; NAAG synthetase A; NAAGS; Ribosomal protein S6 modification-like protein A
Gene ID	284716.0
SwissProt ID	Q8IXN7
Immunogen	The antiserum was produced against synthesized peptide derived from human RIMKA. AA range:112-161

Background

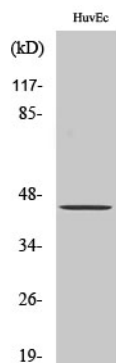
cofactor: Binds 2 manganese ions per subunit., similarity: Belongs to the rimK family., similarity: Contains 1 ATP-grasp domain., cofactor: Binds 2 manganese ions per subunit., similarity: Belongs to the rimK family., similarity: Contains 1 ATP-grasp domain.,

Research Area

Image Data



Western blot analysis of lysates from HUVEC, COS, and Jurkat cells, using RIMKA Antibody. The lane on the right is blocked with the synthesized peptide.



Western Blot analysis of various cells using FAM80A Polyclonal Antibody