

Product Name: FAM48A Rabbit Polyclonal Antibody**Catalog #: APRab10816**

For research use only.

Summary

Description	Rabbit polyclonal Antibody
Host	Rabbit
Application	WB,ELISA
Reactivity	Human,Mouse,Rat
Conjugation	Unconjugated
Modification	Unmodified
Isotype	IgG
Clonality	Polyclonal
Form	Liquid
Concentration	1mg/ml
Storage	Aliquot and store at -20°C (valid for 12 months). Avoid freeze/thaw cycles.
Shipping	Ice bags
Buffer	Liquid in PBS containing 50% glycerol, 0.5% protective protein and 0.02% New type preservative N.
Purification	Affinity purification

Application

Dilution Ratio	WB 1:500-1:2000,ELISA 1:10000-1:20000
Molecular Weight	85kDa

Antigen Information

Gene Name	FAM48A C13orf19 FP757
Alternative Names	FAM48A C13orf19 FP757
Gene ID	55578.0
SwissProt ID	Q8NEM7
Immunogen	The antiserum was produced against synthesized peptide derived from the Internal region of human FAM48A. AA range:231-280

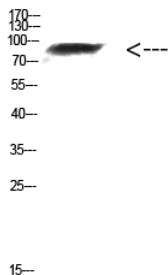
Background

function:Required for MAP kinase p38 (MAPK11, MAPK12, MAPK13 and/or MAPK14) activation during gastrulation. Required

for down-regulation of E-cadherin during gastrulation by regulating E-cadherin protein level downstream from NCK-interacting kinase (NIK) and independently of the regulation of transcription by Fgf signaling and Snail.,similarity:Belongs to the FAM48 family.,subunit:Interacts with MAPK14.,tissue specificity:Highly expressed in testis, moderately in brain and pituitary gland. Expressed in several fetal tissues, including lung, brain, thymus and kidney. Expression is down-regulated in malignant prostate tissues.,function:Required for MAP kinase p38 (MAPK11, MAPK12, MAPK13 and/or MAPK14) activation during gastrulation. Required for down-regulation of E-cadherin during gastrulation by regulating E-cadherin protein level downstream from NCK-interacting kinase (NIK) and independently of the regulation of transcription by Fgf signaling and Snail.,similarity:Belongs to the FAM48 family.,subunit:Interacts with MAPK14.,tissue specificity:Highly expressed in testis, moderately in brain and pituitary gland. Expressed in several fetal tissues, including lung, brain, thymus and kidney. Expression is down-regulated in malignant prostate tissues.,

Research Area

Image Data



Western Blot analysis of mouse-kidney cells using Antibody diluted at 1000. Secondary antibody was diluted at 1:20000