
Product Name: FA58A Rabbit Polyclonal Antibody**Catalog #: APRab10753**

For research use only.

Summary

Description	Rabbit polyclonal Antibody
Host	Rabbit
Application	WB,ELISA
Reactivity	Human,Mouse,Rat
Conjugation	Unconjugated
Modification	Unmodified
Isotype	IgG
Clonality	Polyclonal
Form	Liquid
Concentration	1mg/ml
Storage	Aliquot and store at -20°C (valid for 12 months). Avoid freeze/thaw cycles.
Shipping	Ice bags
Buffer	Liquid in PBS containing 50% glycerol, and 0.02% New type preservative N.
Purification	Affinity purification

Application

Dilution Ratio	WB 1:500-1:2000,ELISA 1:5000-1:20000
Molecular Weight	27kDa

Antigen Information

Gene Name	FAM58A
Alternative Names	
Gene ID	92002.0
SwissProt ID	Q8N1B3
Immunogen	Synthesized peptide derived from human protein . at AA range: 30-110

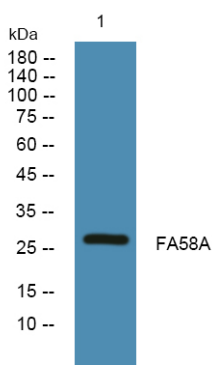
Background

Mutations in this gene have been shown to cause an X-linked dominant STAR syndrome that typically manifests syndactyly, telecanthus and anogenital and renal malformations. The protein encoded by this gene contains a cyclin-box-fold domain which suggests it may have a role in controlling nuclear cell division cycles. Alternative splicing results in multiple transcript

variants encoding distinct isoforms. [provided by RefSeq, Oct 2008],disease:Defects in FAM58A are the cause of toe syndactyly, telecanthus, and anogenital and renal malformations (STAR) [MIM:300707]; also known as STAR syndrome or syndactyly with renal and anogenital malformations.,function:May have a role in cell proliferation.,similarity:Belongs to the cyclin family. Cyclin-like FAM58 subfamily.,subunit:Interacts with SALL1.,

Research Area

Image Data



Western blot analysis of lysates from PC12 cells, FA58A Rabbit Polyclonal Antibody was diluted at 1:1000, 4° over night