
Product Name: Ezrin Rabbit Polyclonal Antibody**Catalog #: APRab10671**

For research use only.

Summary

Description	Rabbit polyclonal Antibody
Host	Rabbit
Application	WB,ICC/IF,ELISA
Reactivity	Human,Mouse,Rat
Conjugation	Unconjugated
Modification	Unmodified
Isotype	IgG
Clonality	Polyclonal
Form	Liquid
Concentration	1mg/ml
Storage	Aliquot and store at -20°C (valid for 12 months). Avoid freeze/thaw cycles.
Shipping	Ice bags
Buffer	Liquid in PBS containing 50% glycerol, 0.5% protective protein and 0.02% New type preservative N.
Purification	Affinity purification

Application

Dilution Ratio	WB 1:500-1:2000,ICC/IF 1:50-1:200,ELISA 1:10000-1:20000
Molecular Weight	70kDa

Antigen Information

Gene Name	EZR
Alternative Names	EZR; VIL2; Ezrin; Cytovillin; Villin-2; p81
Gene ID	7430.0
SwissProt ID	P15311
Immunogen	The antiserum was produced against synthesized peptide derived from human Ezrin. AA range:511-560

Background

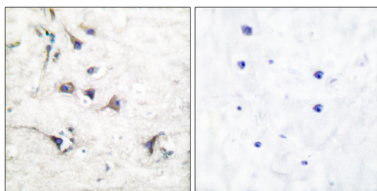
The cytoplasmic peripheral membrane protein encoded by this gene functions as a protein-tyrosine kinase substrate in

microvilli. As a member of the ERM protein family, this protein serves as an intermediate between the plasma membrane and the actin cytoskeleton. This protein plays a key role in cell surface structure adhesion, migration and organization, and it has been implicated in various human cancers. A pseudogene located on chromosome 3 has been identified for this gene. Alternatively spliced variants have also been described for this gene. [provided by RefSeq, Jul 2008],developmental stage:Very strong staining is detected in the Purkinje cell layer and in part of the molecular layer of the infant brain compared to adult brain.,function:Probably involved in connections of major cytoskeletal structures to the plasma membrane. In epithelial cells, required for the formation of microvilli and membrane ruffles on the apical pole. Along with PLEKHG6, required for normal macropinocytosis.,PTM:Phosphorylated by tyrosine-protein kinases.,similarity:Contains 1 FERM domain.,subcellular location:Localization to the apical membrane of parietal cells depends on the interaction with MPP5. Localizes to cell extensions and peripheral processes of astrocytes (By similarity). Microvillar peripheral membrane protein (cytoplasmic side),subunit:Interacts with MPP5 (By similarity). Interacts with SLC9A3R1 and SCYL3/PACE1. Interacts with PLEKHG6. Interacts with NGX6.,tissue specificity:Expressed in cerebral cortex, basal ganglia, hippocampus, hypophysis, and optic nerve. Weakly expressed in brain stem and diencephalon. Stronger expression was detected in gray matter of frontal lobe compared to white matter (at protein level). Component of the microvilli of intestinal epithelial cells. Preferentially expressed in astrocytes of hippocampus, frontal cortex, thalamus, parahippocampal cortex, amygdala, insula, and corpus callosum. Not detected in neurons in most tissues studied.,

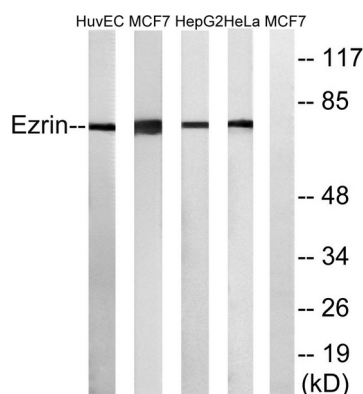
Research Area

Leukocyte transendothelial migration;Regulates Actin and Cytoskeleton;Pathogenic Escherichia coli infection;

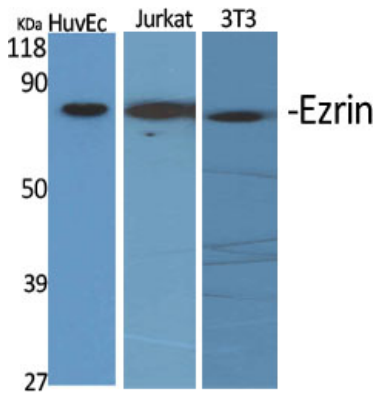
Image Data



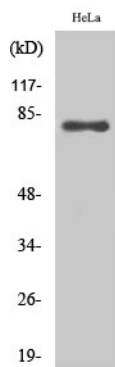
Immunohistochemistry analysis of paraffin-embedded human brain tissue, using Ezrin Antibody. The picture on the right is blocked with the synthesized peptide.



Western blot analysis of lysates from HuvE, MCF-7, HepG2, and HeLa cells, using Ezrin Antibody. The lane on the right is blocked with the synthesized peptide.



Western Blot analysis of various cells using Ezrin Polyclonal Antibody diluted at 1:2000



Western Blot analysis of MCF7 cells using Ezrin Polyclonal Antibody diluted at 1:2000