

---

**Product Name: ETL Rabbit Polyclonal Antibody****Catalog #: APRab10646**

For research use only.

**Summary**

<b>Description</b>	Rabbit polyclonal Antibody
<b>Host</b>	Rabbit
<b>Application</b>	WB,ICC/IF,ELISA
<b>Reactivity</b>	Human,Rat,Mouse
<b>Conjugation</b>	Unconjugated
<b>Modification</b>	Unmodified
<b>Isotype</b>	IgG
<b>Clonality</b>	Polyclonal
<b>Form</b>	Liquid
<b>Concentration</b>	1mg/ml
<b>Storage</b>	Aliquot and store at -20°C (valid for 12 months). Avoid freeze/thaw cycles.
<b>Shipping</b>	Ice bags
<b>Buffer</b>	Liquid in PBS containing 50% glycerol, 0.5% protective protein and 0.02% New type preservative N.
<b>Purification</b>	Affinity purification

**Application**

<b>Dilution Ratio</b>	WB 1:500-1:2000,ICC/IF 1:200-1:1000,ELISA 1:10000-1:20000
<b>Molecular Weight</b>	77kDa

**Antigen Information**

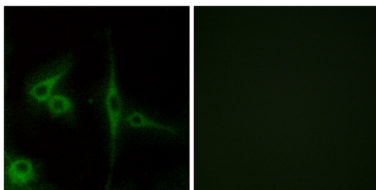
<b>Gene Name</b>	ELTD1
<b>Alternative Names</b>	ELTD1; ETL; EGF; latrophilin and seven transmembrane domain-containing protein 1; EGF-TM7-latrophilin-related protein; ETL protein
<b>Gene ID</b>	64123.0
<b>SwissProt ID</b>	Q9HBW9
<b>Immunogen</b>	The antiserum was produced against synthesized peptide derived from human ELTD1. AA range:251-300

**Background**

developmental stage:Up-regulated in the adult heart.,domain:The transmembrane domain is not required for cleavage, but it is required for dimer formation.,function:Could be involved in cardiac development.,PTM:Proteolytically cleaved into 2 subunits, an extracellular alpha subunit and a seven-transmembrane subunit.,similarity:Belongs to the G-protein coupled receptor 2 family. LN-TM7 subfamily.,similarity:Contains 1 GPS domain.,similarity:Contains 2 EGF-like domains.,subunit:Forms a heterodimer, consisting of a large extracellular region (alpha subunit) non-covalently linked to a seven-transmembrane moiety (beta subunit). Forms stable dimer at the cells surface.,tissue specificity:Mainly expressed in smooth muscle.,developmental stage:Up-regulated in the adult heart.,domain:The transmembrane domain is not required for cleavage, but it is required for dimer formation.,function:Could be involved in cardiac development.,PTM:Proteolytically cleaved into 2 subunits, an extracellular alpha subunit and a seven-transmembrane subunit.,similarity:Belongs to the G-protein coupled receptor 2 family. LN-TM7 subfamily.,similarity:Contains 1 GPS domain.,similarity:Contains 2 EGF-like domains.,subunit:Forms a heterodimer, consisting of a large extracellular region (alpha subunit) non-covalently linked to a seven-transmembrane moiety (beta subunit). Forms stable dimer at the cells surface.,tissue specificity:Mainly expressed in smooth muscle.,

## Research Area

## Image Data



Immunofluorescence analysis of LOVO cells, using ELTD1 Antibody. The picture on the right is blocked with the synthesized peptide.