

Product Name: Ethanolamine kinase 2 Rabbit Polyclonal Antibody**Catalog #: APRab10645**

For research use only.

Summary

| | |
|----------------------|---|
| Description | Rabbit polyclonal Antibody |
| Host | Rabbit |
| Application | WB,ICC/IF,ELISA |
| Reactivity | Human,Mouse |
| Conjugation | Unconjugated |
| Modification | Unmodified |
| Isotype | IgG |
| Clonality | Polyclonal |
| Form | Liquid |
| Concentration | 1mg/ml |
| Storage | Aliquot and store at -20°C (valid for 12 months). Avoid freeze/thaw cycles. |
| Shipping | Ice bags |
| Buffer | Liquid in PBS containing 50% glycerol, 0.5% protective protein and 0.02% New type preservative N. |
| Purification | Affinity purification |

Application

| | |
|-------------------------|--|
| Dilution Ratio | WB 1:500-1:2000,ICC/IF 1:50-1:200,ELISA 1:5000-1:10000 |
| Molecular Weight | 45kDa |

Antigen Information

| | |
|--------------------------|---|
| Gene Name | ETNK2 |
| Alternative Names | ETNK2; EK12; HMFT1716; Ethanolamine kinase 2; EK1 2; Ethanolamine kinase-like protein |
| Gene ID | 55224.0 |
| SwissProt ID | Q9NVF9 |
| Immunogen | The antiserum was produced against synthesized peptide derived from human EK12. AA range:51-100 |

Background

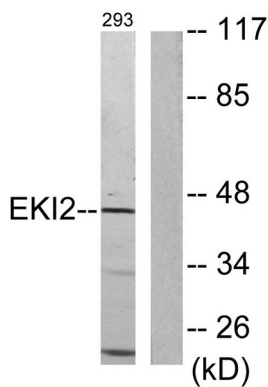
The protein encoded by this gene is a member of choline/ethanolamine kinase family which catalyzes the first step of

phosphatidylethanolamine (PtdEtn) biosynthesis via the cytidine diphosphate (CDP) ethanolamine pathway. Alternative splicing results in multiple transcript variants. [provided by RefSeq, Jul 2014], catalytic activity: ATP + ethanolamine = ADP + O-phosphoethanolamine, similarity: Belongs to the choline/ethanolamine kinase family.,

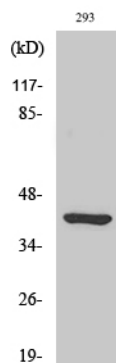
Research Area

Glycerophospholipid metabolism;

Image Data



Western blot analysis of lysates from 293 cells, using EKI2 Antibody. The lane on the right is blocked with the synthesized peptide.



Western Blot analysis of various cells using Ethanolamine kinase 2 Polyclonal Antibody