
Product Name: ET-1 Rabbit Polyclonal Antibody**Catalog #: APRab10640**

For research use only.

Summary

Description	Rabbit polyclonal Antibody
Host	Rabbit
Application	WB,IHC,ICC/IF,ELISA
Reactivity	Human,Rat,Mouse
Conjugation	Unconjugated
Modification	Unmodified
Isotype	IgG
Clonality	Polyclonal
Form	Liquid
Concentration	1mg/ml
Storage	Aliquot and store at -20°C (valid for 12 months). Avoid freeze/thaw cycles.
Shipping	Ice bags
Buffer	Liquid in PBS containing 50% glycerol, 0.5% protective protein and 0.02% New type preservative N.
Purification	Affinity purification

Application

Dilution Ratio	WB 1:500-1:2000,IHC 1:100-1:300,ICC/IF 1:50-1:200,ELISA 1:10000-1:20000
Molecular Weight	25kDa

Antigen Information

Gene Name	EDN1
Alternative Names	EDN1; Endothelin-1; Preproendothelin-1; PPET1
Gene ID	1906.0
SwissProt ID	P05305
Immunogen	The antiserum was produced against synthesized peptide derived from the Internal region of human EDN1. AA range:131-180

Background

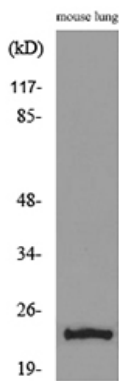
This gene encodes a preproprotein that is proteolytically processed to generate a secreted peptide that belongs to the

endothelin/sarafotoxin family. This peptide is a potent vasoconstrictor and its cognate receptors are therapeutic targets in the treatment of pulmonary arterial hypertension. Aberrant expression of this gene may promote tumorigenesis. Alternative splicing results in multiple transcript variants. [provided by RefSeq, Oct 2015],function:Endothelins are endothelium-derived vasoconstrictor peptides.,online information:Endothelin entry,similarity:Belongs to the endothelin/sarafotoxin family.,tissue specificity:Expressed in lung, placental stem villi vessels and in cultured placental vascular smooth muscle cells.,

Research Area

Melanogenesis;

Image Data



Western blot analysis of lysate from mouse lung, using EDN1 Antibody.



Western Blot analysis of mouse lung cells using ET-1 Polyclonal Antibody.. Secondary antibody was diluted at 1:20000