

---

**Product Name: ERLIN1/2 Rabbit Polyclonal Antibody****Catalog #: APRab10606**

For research use only.

**Summary**

<b>Description</b>	Rabbit polyclonal Antibody
<b>Host</b>	Rabbit
<b>Application</b>	WB,ELISA
<b>Reactivity</b>	Human,Mouse,Rat
<b>Conjugation</b>	Unconjugated
<b>Modification</b>	Unmodified
<b>Isotype</b>	IgG
<b>Clonality</b>	Polyclonal
<b>Form</b>	Liquid
<b>Concentration</b>	1mg/ml
<b>Storage</b>	Aliquot and store at -20°C (valid for 12 months). Avoid freeze/thaw cycles.
<b>Shipping</b>	Ice bags
<b>Buffer</b>	Liquid in PBS containing 50% glycerol, 0.5% protective protein and 0.02% New type preservative N.
<b>Purification</b>	Affinity purification

**Application**

<b>Dilution Ratio</b>	WB 1:500-1:2000,ELISA 1:10000-1:20000
<b>Molecular Weight</b>	40+42kDa

**Antigen Information**

<b>Gene Name</b>	ERLIN1/ERLIN2
<b>Alternative Names</b>	
<b>Gene ID</b>	
<b>SwissProt ID</b>	O75477/O94905
<b>Immunogen</b>	Synthesized peptide derived from ERLIN1/2 at AA range: 31-80

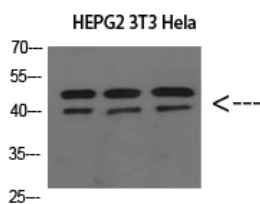
**Background**

similarity:Belongs to the band 7/mec-2 family.,subcellular location:Associated with lipid raft-like domains of the endoplasmic reticulum membrane.,tissue specificity:Expressed in heart, placenta, liver, kidney, pancreas, prostate, testis, ovary and small

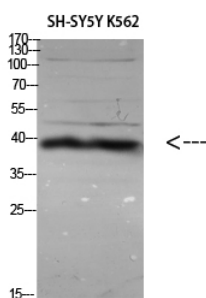
intestin.,similarity:Belongs to the band 7/mec-2 family.,subcellular location:Associated with lipid raft-like domains of the endoplasmic reticulum membrane.,tissue specificity:Expressed in heart, placenta, liver, kidney, pancreas, prostate, testis, ovary and small intestin.,

## Research Area

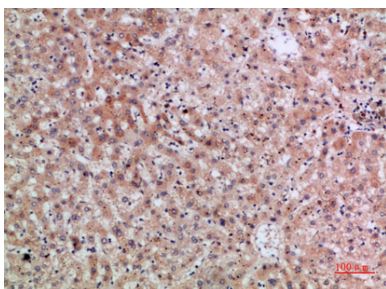
## Image Data



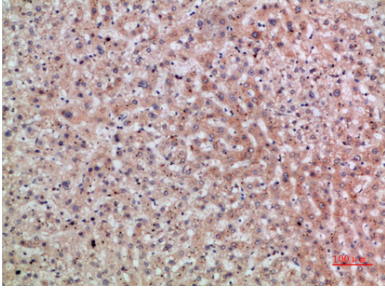
Western Blot analysis of HEPG2 3T3 HeLa cells using ERLIN1/2 Polyclonal Antibody diluted at 1:800. Secondary antibody was diluted at 1:20000



Western Blot analysis of various cells using Antibody diluted at 1:1000. Secondary antibody was diluted at 1:20000



Immunohistochemical analysis of paraffin-embedded human-liver, antibody was diluted at 1:200



Immunohistochemical analysis of paraffin-embedded human-liver, antibody was diluted at 1:200