

Product Name: ERF Rabbit Polyclonal Antibody**Catalog #: APRab10585**

For research use only.

Summary

Description	Rabbit polyclonal Antibody
Host	Rabbit
Application	WB,IHC,ICC/IF,ELISA
Reactivity	Human,Mouse
Conjugation	Unconjugated
Modification	Unmodified
Isotype	IgG
Clonality	Polyclonal
Form	Liquid
Concentration	1mg/ml
Storage	Aliquot and store at -20°C (valid for 12 months). Avoid freeze/thaw cycles.
Shipping	Ice bags
Buffer	Liquid in PBS containing 50% glycerol, 0.5% protective protein and 0.02% New type preservative N.
Purification	Affinity purification

Application

Dilution Ratio WB 1:500-1:2000,IHC 1:100-1:300,ICC/IF 1:200-1:1000,ELISA 1:5000-1:20000

Molecular Weight

Antigen Information

Gene Name	ERF
Alternative Names	ERF; ETS domain-containing transcription factor ERF; Ets2 repressor factor; PE-2
Gene ID	2077.0
SwissProt ID	P50548
Immunogen	The antiserum was produced against synthesized peptide derived from human ERF. AA range:492-541

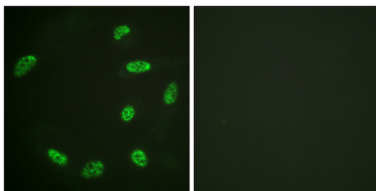
Background

ETS2 is a transcription factor and protooncogene involved in development, apoptosis, and the regulation of telomerase. The

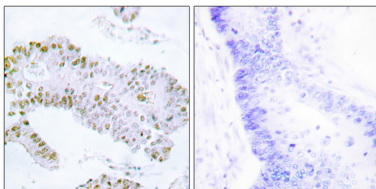
protein encoded by this gene binds to the ETS2 promoter and is a strong repressor of ETS2 transcription. Several transcript variants encoding two different isoforms have been found for this gene. [provided by RefSeq, Aug 2015],function:Potent transcriptional repressor that binds to the H1 element of the Ets2 promoter. May regulate other genes involved in cellular proliferation. Required for extraembryonic ectoderm differentiation, ectoplacental cone cavity closure, and chorioallantoic attachment (By similarity). May be important for regulating trophoblast stem cell differentiation.,PTM:Phosphorylated by multiple kinases including probably ERK2. Phosphorylation regulates the activity of ERF.,sequence caution:The sequence differs from that shown because it seems to be derived from a pre-mRNA.,similarity:Belongs to the ETS family.,similarity:Contains 1 ETS DNA-binding domain.,tissue specificity:Highest levels in testis, ovary, pancreas, and heart.,

Research Area

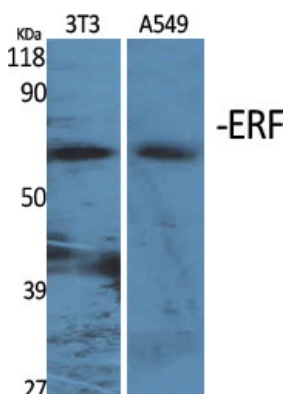
Image Data



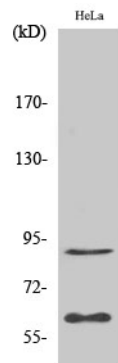
Immunofluorescence analysis of HeLa cells, using ERF Antibody. The picture on the right is blocked with the synthesized peptide.



Immunohistochemistry analysis of paraffin-embedded human colon carcinoma tissue, using ERF Antibody. The picture on the right is blocked with the synthesized peptide.



Western Blot analysis of various cells using ERF Polyclonal Antibody cells nucleus extracted by Minute TM Cytoplasmic and Nuclear Fractionation kit (SC-003, Invent biotech, MN, USA) .



Western Blot analysis of HepG2 cells using ERF Polyclonal Antibody cells nucleus extracted by Minute TM Cytoplasmic and Nuclear Fractionation kit (SC-003, Invent biotech, MN, USA).