

---

**Product Name: ERCC4 Rabbit Polyclonal Antibody****Catalog #: APRab10581**

For research use only.

**Summary**

<b>Description</b>	Rabbit polyclonal Antibody
<b>Host</b>	Rabbit
<b>Application</b>	WB,ELISA
<b>Reactivity</b>	Human,Mouse
<b>Conjugation</b>	Unconjugated
<b>Modification</b>	Unmodified
<b>Isotype</b>	IgG
<b>Clonality</b>	Polyclonal
<b>Form</b>	Liquid
<b>Concentration</b>	1mg/ml
<b>Storage</b>	Aliquot and store at -20°C (valid for 12 months). Avoid freeze/thaw cycles.
<b>Shipping</b>	Ice bags
<b>Buffer</b>	Liquid in PBS containing 50% glycerol, 0.5% protective protein and 0.02% New type preservative N.
<b>Purification</b>	Affinity purification

**Application**

<b>Dilution Ratio</b>	WB 1:500-1:2000,ELISA 1:5000-1:20000
<b>Molecular Weight</b>	103kDa

**Antigen Information**

<b>Gene Name</b>	ERCC4 ERCC4; ERCC11; XPF; DNA repair endonuclease XPF; DNA excision repair protein ERCC-4;
<b>Alternative Names</b>	DNA repair protein complementing XP-F cells; Xeroderma pigmentosum group F-complementing protein
<b>Gene ID</b>	2072.0
<b>SwissProt ID</b>	Q92889
<b>Immunogen</b>	The antiserum was produced against synthesized peptide derived from human XPF. AA range:801-850

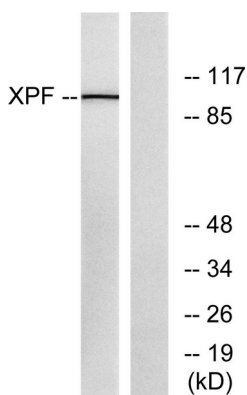
## Background

The protein encoded by this gene forms a complex with ERCC1 and is involved in the 5' incision made during nucleotide excision repair. This complex is a structure specific DNA repair endonuclease that interacts with EME1. Defects in this gene are a cause of xeroderma pigmentosum complementation group F (XP-F), or xeroderma pigmentosum VI (XP6). [provided by RefSeq, Mar 2009], cofactor: Magnesium., disease: Defects in ERCC4 are a cause of XFE progeroid syndrome [MIM:610965]. This syndrome is illustrated by one patient who presented with dwarfism, cachexia and microcephaly., disease: Defects in ERCC4 are the cause of xeroderma pigmentosum complementation group F (XP-F) [MIM:278760]; also known as xeroderma pigmentosum VI (XP6). XP-F is an autosomal recessive disease characterized by hypersensitivity of the skin to sunlight followed by high incidence of skin cancer and frequent neurologic abnormalities., function: Structure-specific DNA repair endonuclease responsible for the 5-prime incision during DNA repair. Involved in homologous recombination that assists in removing interstrand cross-link., similarity: Belongs to the XPF family., subunit: Heterodimer composed of ERCC1 and XPF/ERCC4. Interacts with EME1.,

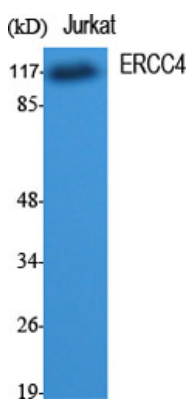
## Research Area

Nucleotide excision repair;

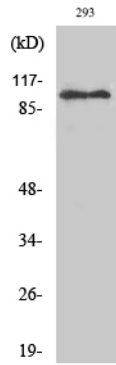
## Image Data



Western blot analysis of lysates from 293 cells, using XPF Antibody. The lane on the right is blocked with the synthesized peptide.



Western Blot analysis of various cells using ERCC4 Polyclonal Antibody.



Western Blot analysis of 293 cells using ERCC4 Polyclonal Antibody.