
Product Name: Eps8L2 Rabbit Polyclonal Antibody**Catalog #: APRab10549**

For research use only.

Summary

Description	Rabbit polyclonal Antibody
Host	Rabbit
Application	WB,IHC,ICC/IF,ELISA
Reactivity	Human,Mouse
Conjugation	Unconjugated
Modification	Unmodified
Isotype	IgG
Clonality	Polyclonal
Form	Liquid
Concentration	1mg/ml
Storage	Aliquot and store at -20°C (valid for 12 months). Avoid freeze/thaw cycles.
Shipping	Ice bags
Buffer	Liquid in PBS containing 50% glycerol, 0.5% protective protein and 0.02% New type preservative N.
Purification	Affinity purification

Application

Dilution Ratio	WB 1:500-1:2000,IHC 1:100-1:300,ICC/IF 1:200-1:1000,ELISA 1:20000-1:40000
Molecular Weight	81kDa

Antigen Information

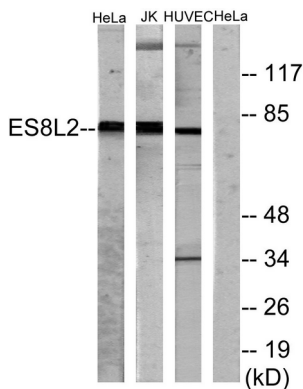
Gene Name	EPS8L2 EPS8L2; EPS8R2; PP13181; Epidermal growth factor receptor kinase substrate 8-like protein
Alternative Names	2; EPS8-like protein 2; Epidermal growth factor receptor pathway substrate 8-related protein 2; EPS8-related protein 2
Gene ID	64787.0
SwissProt ID	Q9H6S3
Immunogen	The antiserum was produced against synthesized peptide derived from human ES8L2. AA range:1-50

Background

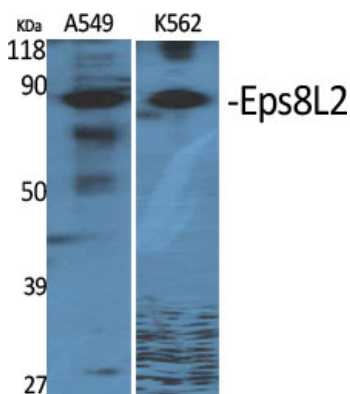
This gene encodes a member of the EPS8 gene family. The encoded protein, like other members of the family, is thought to link growth factor stimulation to actin organization, generating functional redundancy in the pathways that regulate actin cytoskeletal remodeling. [provided by RefSeq, Dec 2008],function:Stimulates guanine exchange activity of SOS1. May play a role in membrane ruffling and remodeling of the actin cytoskeleton.,similarity:Belongs to the EPS8 family.,similarity:Contains 1 PID domain.,similarity:Contains 1 SH3 domain.,subunit:Interacts with ABI1. Part of a complex that contains SOS1, ABI1 and EPS8L2. Associates with F-actin.,tissue specificity:Detected in fibroblasts and placenta.,

Research Area

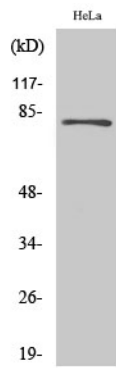
Image Data



Western blot analysis of lysates from HeLa, Jurkat, and HUVEC cells, using ES8L2 Antibody. The lane on the right is blocked with the synthesized peptide.



Western Blot analysis of various cells using Eps8L2 Polyclonal Antibody



Western Blot analysis of HuvEc cells using Eps8L2 Polyclonal Antibody