
Product Name: Ephrin-A4 Rabbit Polyclonal Antibody**Catalog #: APRab10536**

For research use only.

Summary

Description	Rabbit polyclonal Antibody
Host	Rabbit
Application	WB,ELISA
Reactivity	Human,Mouse
Conjugation	Unconjugated
Modification	Unmodified
Isotype	IgG
Clonality	Polyclonal
Form	Liquid
Concentration	1mg/ml
Storage	Aliquot and store at -20°C (valid for 12 months). Avoid freeze/thaw cycles.
Shipping	Ice bags
Buffer	Liquid in PBS containing 50% glycerol, 0.5% protective protein and 0.02% New type preservative N.
Purification	Affinity purification

Application

Dilution Ratio	WB 1:500-1:2000,ELISA 1:20000-1:40000
Molecular Weight	95kDa

Antigen Information

Gene Name	EFNA4
Alternative Names	EFNA4; EPLG4; LERK4; Ephrin-A4; EPH-related receptor tyrosine kinase ligand 4; LERK-4
Gene ID	1945.0
SwissProt ID	P52798
Immunogen	The antiserum was produced against synthesized peptide derived from human EFNA4. AA range:131-180

Background

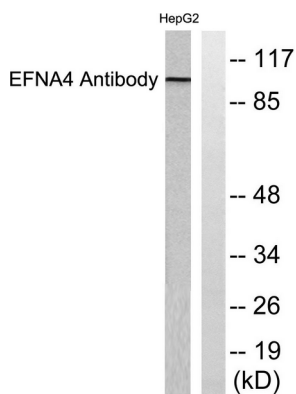
This gene encodes a member of the ephrin (EPH) family. The ephrins and EPH-related receptors comprise the largest subfamily

of receptor protein-tyrosine kinases and have been implicated in mediating developmental events, especially in the nervous system and in erythropoiesis. Based on their structures and sequence relationships, ephrins are divided into the ephrin-A (EFNA) class, which are anchored to the membrane by a glycosylphosphatidylinositol linkage, and the ephrin-B (EFNB) class, which are transmembrane proteins. This gene encodes an EFNA class ephrin. Three transcript variants that encode distinct proteins have been identified. [provided by RefSeq, Jul 2008],function:May play a role in the interaction between activated B lymphocytes and dendritic cells in tonsils.,similarity:Belongs to the ephrin family.,tissue specificity:Expressed in the adult spleen, lymph node, prostate, ovary, small intestine, and colon, and in fetal heart, lung, liver and kidney. Also detected in hematopoietic cell lines.,

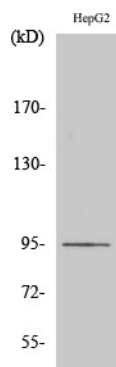
Research Area

Axon guidance;

Image Data



Western blot analysis of lysates from HepG2 cells, using EFNA4 Antibody. The lane on the right is blocked with the synthesized peptide.



Western Blot analysis of various cells using Ephrin-A4 Polyclonal Antibody diluted at 1: 500