
Product Name: Ephrin-A1 Rabbit Polyclonal Antibody**Catalog #: APRab10533**

For research use only.

Summary

Description	Rabbit polyclonal Antibody
Host	Rabbit
Application	WB,IHC,ICC/IF,ELISA
Reactivity	Human,Mouse,Rat
Conjugation	Unconjugated
Modification	Unmodified
Isotype	IgG
Clonality	Polyclonal
Form	Liquid
Concentration	1mg/ml
Storage	Aliquot and store at -20°C (valid for 12 months). Avoid freeze/thaw cycles.
Shipping	Ice bags
Buffer	Liquid in PBS containing 50% glycerol, 0.5% protective protein and 0.02% New type preservative N.
Purification	Affinity purification

Application

Dilution Ratio	WB 1:500-1:2000,IHC 1:100-1:300,ICC/IF 1:200-1:1000,ELISA 1:5000-1:20000
Molecular Weight	24kDa

Antigen Information

Gene Name	EFNA1 EFNA1; EPLG1; LERK1; TNFAIP4; Ephrin-A1; EPH-related receptor tyrosine kinase ligand 1;
Alternative Names	LERK-1; Immediate early response protein B61; Tumor necrosis factor alpha-induced protein 4; TNF alpha-induced protein 4
Gene ID	1942.0
SwissProt ID	P20827
Immunogen	The antiserum was produced against synthesized peptide derived from human EFNA1. AA range:66-115

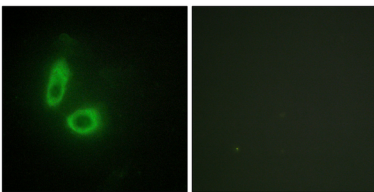
Background

This gene encodes a member of the ephrin (EPH) family. The ephrins and EPH-related receptors comprise the largest subfamily of receptor protein-tyrosine kinases and have been implicated in mediating developmental events, especially in the nervous system and in erythropoiesis. Based on their structures and sequence relationships, ephrins are divided into the ephrin-A (EFNA) class, which are anchored to the membrane by a glycosylphosphatidylinositol linkage, and the ephrin-B (EFNB) class, which are transmembrane proteins. This gene encodes an EFNA class ephrin which binds to the EPHA2, EPHA4, EPHA5, EPHA6, and EPHA7 receptors. Two transcript variants that encode different isoforms were identified through sequence analysis. [provided by RefSeq, Jul 2008], induction:By TNF-alpha and interleukin-1 beta., similarity:Belongs to the ephrin family., subunit: Binds to the receptor tyrosine kinases EPHA2, EPHA4, EPHA5, EPHA6 and EPHA7. Also binds with low affinity to EPHA1.,

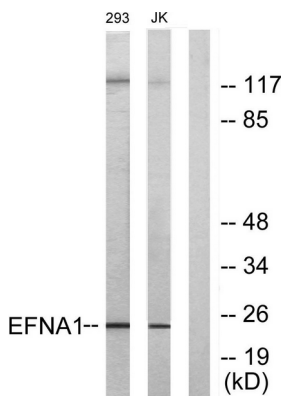
Research Area

Axon guidance;

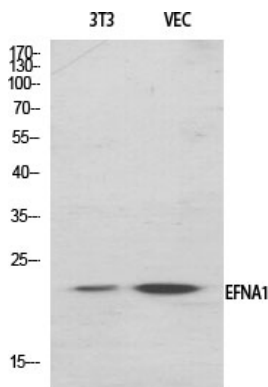
Image Data



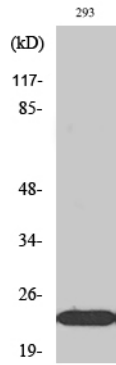
Immunofluorescence analysis of HeLa cells, using EFNA1 Antibody. The picture on the right is blocked with the synthesized peptide.



Western blot analysis of lysates from 293 and Jurkat cells, using EFNA1 Antibody. The lane on the right is blocked with the synthesized peptide.



Western Blot analysis of various cells using Ephrin-A1 Polyclonal Antibody diluted at 1: 2000



Western Blot analysis of Jurkat cells using Ephrin-A1 Polyclonal Antibody diluted at 1: 2000