
Product Name: EphA6 Rabbit Polyclonal Antibody**Catalog #: APRab10521**

For research use only.

Summary

Description	Rabbit polyclonal Antibody
Host	Rabbit
Application	IHC, ICC/IF, ELISA
Reactivity	Human, Mouse, Rat
Conjugation	Unconjugated
Modification	Unmodified
Isotype	IgG
Clonality	Polyclonal
Form	Liquid
Concentration	1mg/ml
Storage	Aliquot and store at -20°C (valid for 12 months). Avoid freeze/thaw cycles.
Shipping	Ice bags
Buffer	Liquid in PBS containing 50% glycerol, 0.5% protective protein and 0.02% New type preservative N.
Purification	Affinity purification

Application

Dilution Ratio IHC 1:100-1:300, ICC/IF 1:200-1:1000, ELISA 1:10000-1:20000

Molecular Weight

Antigen Information

Gene Name	EPHA6
Alternative Names	EPHA6; EHK2; HEK12; Ephrin type-A receptor 6; EPH homology kinase 2; EHK-2; EPH-like kinase 12; EK12
Gene ID	285220.0
SwissProt ID	Q9UF33
Immunogen	The antiserum was produced against synthesized peptide derived from human EPHA6. AA range:891-940

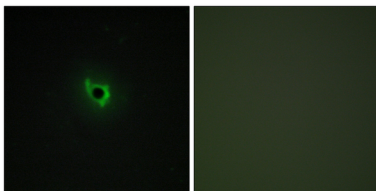
Background

catalytic activity:ATP + a [protein]-L-tyrosine = ADP + a [protein]-L-tyrosine phosphate.,function:Receptor for members of the ephrin-A family.,similarity:Belongs to the protein kinase superfamily. Tyr protein kinase family. Ephrin receptor subfamily.,similarity:Contains 1 protein kinase domain.,similarity:Contains 1 SAM (sterile alpha motif) domain.,similarity:Contains 2 fibronectin type-III domains.,tissue specificity:Expressed in brain and testis.,catalytic activity:ATP + a [protein]-L-tyrosine = ADP + a [protein]-L-tyrosine phosphate.,function:Receptor for members of the ephrin-A family.,similarity:Belongs to the protein kinase superfamily. Tyr protein kinase family. Ephrin receptor subfamily.,similarity:Contains 1 protein kinase domain.,similarity:Contains 1 SAM (sterile alpha motif) domain.,similarity:Contains 2 fibronectin type-III domains.,tissue specificity:Expressed in brain and testis.,

Research Area

Axon guidance;

Image Data



Immunofluorescence analysis of COS7 cells, using EPHA6 Antibody. The picture on the right is blocked with the synthesized peptide.