
Product Name: EP3 Rabbit Polyclonal Antibody**Catalog #: APRab10495**

For research use only.

Summary

Description	Rabbit polyclonal Antibody
Host	Rabbit
Application	WB,ICC/IF,ELISA
Reactivity	Human,Rat,Mouse
Conjugation	Unconjugated
Modification	Unmodified
Isotype	IgG
Clonality	Polyclonal
Form	Liquid
Concentration	1mg/ml
Storage	Aliquot and store at -20°C (valid for 12 months). Avoid freeze/thaw cycles.
Shipping	Ice bags
Buffer	Liquid in PBS containing 50% glycerol, 0.5% protective protein and 0.02% New type preservative N.
Purification	Affinity purification

Application

Dilution Ratio	WB 1:500-1:2000,ICC/IF 1:200-1:1000,ELISA 1:5000-1:20000
Molecular Weight	43kDa

Antigen Information

Gene Name	PTGER3
Alternative Names	PTGER3; Prostaglandin E2 receptor EP3 subtype; PGE receptor EP3 subtype; PGE2 receptor EP3 subtype; PGE2-R; Prostanoid EP3 receptor
Gene ID	5733.0
SwissProt ID	P43115
Immunogen	The antiserum was produced against synthesized peptide derived from human PTGER3. AA range:16-65

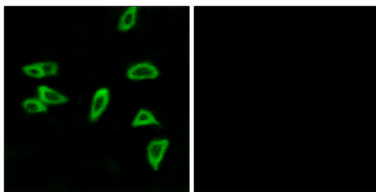
Background

The protein encoded by this gene is a member of the G-protein coupled receptor family. This protein is one of four receptors identified for prostaglandin E2 (PGE2). This receptor may have many biological functions, which involve digestion, nervous system, kidney reabsorption, and uterine contraction activities. Studies of the mouse counterpart suggest that this receptor may also mediate adrenocorticotrophic hormone response as well as fever generation in response to exogenous and endogenous stimuli. Multiple transcript variants encoding different isoforms have been found for this gene. [provided by RefSeq, Aug 2009],alternative products:Additional isoforms seem to exist,function:Receptor for prostaglandin E2 (PGE2); the EP3 receptor may be involved in inhibition of gastric acid secretion, modulation of neurotransmitter release in central and peripheral neurons, inhibition of sodium and water reabsorption in kidney tubulus and contraction in uterine smooth muscle. The activity of this receptor can couple to both the inhibition of adenylate cyclase mediated by G-I proteins, and to an elevation of intracellular calcium. The various isoforms have identical ligand binding properties but can interact with different second messenger systems.,similarity:Belongs to the G-protein coupled receptor 1 family.,tissue specificity:Expressed in small intestine, heart, pancreas, gastric fundic mucosa, mammary artery and pulmonary vessels.,

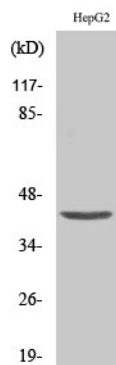
Research Area

Calcium;Neuroactive ligand-receptor interaction;

Image Data



Immunofluorescence analysis of LOVO cells, using PTGER3 Antibody. The picture on the right is blocked with the synthesized peptide.



Western Blot analysis of various cells using EP3 Polyclonal Antibody