

Product Name: Eotaxin-2 Rabbit Polyclonal Antibody**Catalog #: APRab10489**

For research use only.

Summary

Description	Rabbit polyclonal Antibody
Host	Rabbit
Application	IHC, ICC/IF, ELISA
Reactivity	Human, Rat, Mouse
Conjugation	Unconjugated
Modification	Unmodified
Isotype	IgG
Clonality	Polyclonal
Form	Liquid
Concentration	1mg/ml
Storage	Aliquot and store at -20°C (valid for 12 months). Avoid freeze/thaw cycles.
Shipping	Ice bags
Buffer	Liquid in PBS containing 50% glycerol, 0.5% protective protein and 0.02% New type preservative N.
Purification	Affinity purification

Application

Dilution Ratio IHC 1:50-1:200, ICC/IF 1:50-1:200, ELISA 1:10000-1:20000

Molecular Weight

Antigen Information

Gene Name	CCL24 MPIF2 SCYA24
Alternative Names	C-C motif chemokine 24 (CK-beta-6; Eosinophil chemotactic protein 2; Eotaxin-2; Myeloid progenitor inhibitory factor 2; MPIF-2; Small-inducible cytokine A24)
Gene ID	6369.0
SwissProt ID	O00175
Immunogen	Synthetic peptide from human protein at AA range: 61-110

Background

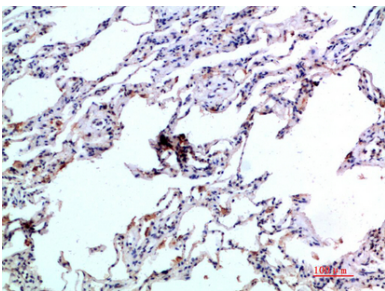
This gene belongs to the subfamily of small cytokine CC genes. Cytokines are a family of secreted proteins involved in

immunoregulatory and inflammatory processes. The CC cytokines are proteins characterized by two adjacent cysteines. The cytokine encoded by this gene displays chemotactic activity on resting T lymphocytes, a minimal activity on neutrophils, and is negative on monocytes and activated T lymphocytes. The protein is also a strong suppressor of colony formation by a multipotential hematopoietic progenitor cell line. [provided by RefSeq, Jul 2008],function:Chemotactic for resting T-lymphocytes, and eosinophils. Has lower chemotactic activity for neutrophils but none for monocytes and activated lymphocytes. Is a strong suppressor of colony formation by a multipotential hematopoietic progenitor cell line. Binds to CCR3.,online information:CCL24 entry,PTM:N-glycosylated.,similarity:Belongs to the intercrine beta (chemokine CC) family.,tissue specificity:Activated monocytes and activated T lymphocytes.,

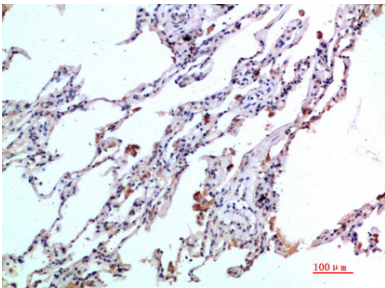
Research Area

Cytokine-cytokine receptor interaction;Chemokine;

Image Data



Immunohistochemical analysis of paraffin-embedded human-lung, antibody was diluted at 1:200



Immunohistochemical analysis of paraffin-embedded human-lung, antibody was diluted at 1:200