
Product Name: ENX-2 Rabbit Polyclonal Antibody**Catalog #: APRab10485**

For research use only.

Summary

Description	Rabbit polyclonal Antibody
Host	Rabbit
Application	WB,IHC,ICC/IF,ELISA
Reactivity	Human,Mouse,Monkey
Conjugation	Unconjugated
Modification	Unmodified
Isotype	IgG
Clonality	Polyclonal
Form	Liquid
Concentration	1mg/ml
Storage	Aliquot and store at -20°C (valid for 12 months). Avoid freeze/thaw cycles.
Shipping	Ice bags
Buffer	Liquid in PBS containing 50% glycerol, 0.5% protective protein and 0.02% New type preservative N.
Purification	Affinity purification

Application

Dilution Ratio	WB 1:500-1:2000,IHC 1:100-1:300,ICC/IF 1:200-1:1000,ELISA 1:20000-1:40000
Molecular Weight	85kDa

Antigen Information

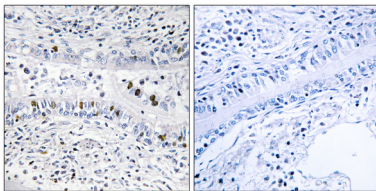
Gene Name	EZH1
Alternative Names	EZH1; KIAA0388; Histone-lysine N-methyltransferase EZH1; ENX-2; Enhancer of zeste homolog 1
Gene ID	2145.0
SwissProt ID	Q92800
Immunogen	The antiserum was produced against synthesized peptide derived from human EZH1. AA range:171-220

Background

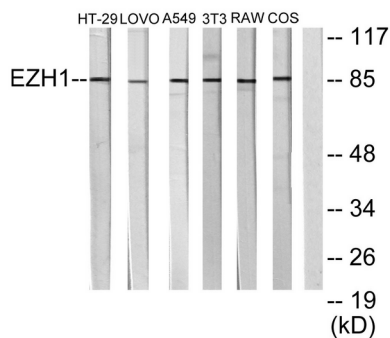
enhancer of zeste 1 polycomb repressive complex 2 subunit(EZH1) Homo sapiens EZH1 is a component of a noncanonical Polycomb repressive complex-2 (PRC2) that mediates methylation of histone H3 (see MIM 602812) lys27 (H3K27) and functions in the maintenance of embryonic stem cell pluripotency and plasticity (Shen et al., 2008 [PubMed 19026780]).[supplied by OMIM, Mar 2009],catalytic activity:S-adenosyl-L-methionine + histone L-lysine = S-adenosyl-L-homocysteine + histone N(6)-methyl-L-lysine.,function:Polycomb group (PcG) protein. Catalytic subunit of the PRC2/EED-EZH1 complex, which methylates 'Lys-27' of histone H3, leading to transcriptional repression of the affected target gene. Able to mono-, di- and trimethylate 'Lys-27' of histone H3 to form H3K27me1, H3K27me2 and H3K27me3, respectively. Required for embryonic stem cell derivation and self-renewal, suggesting that it is involved in safeguarding embryonic stem cell identity. Compared to EZH1-containing complexes, it is less abundant in embryonic stem cells and plays a less critical role in forming H3K27me3, which is required for embryonic stem cell identity and proper differentiation.,similarity:Belongs to the histone-lysine methyltransferase family. EZ subfamily.,similarity:Contains 1 SET domain.,subcellular location:Colocalizes with trimethylated 'Lys-27' of histone H3.,subunit:Component of the PRC2/EED-EZH1 complex, which includes EED, EZH1, SUZ12, RBBP4 and AEBP2. The PRC2/EED-EZH1 is less abundant than the PRC2/EED-EZH2 complex, has weak methyltransferase activity and compacts chromatin in the absence of the methyltransferase cofactor S-adenosyl-L-methionine (SAM),.

Research Area

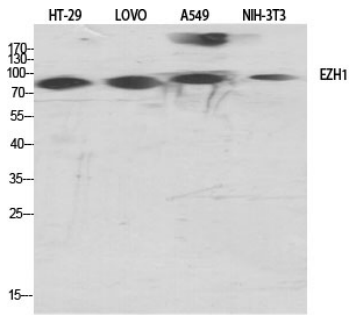
Image Data



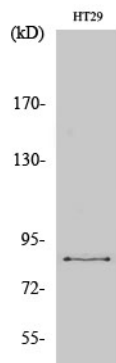
Immunohistochemistry analysis of paraffin-embedded human lung carcinoma tissue, using EZH1 Antibody. The picture on the right is blocked with the synthesized peptide.



Western blot analysis of lysates from HT-29, LOVO, A549, NIH/3T3, RAW264.7, and COS7 cells, using EZH1 Antibody. The lane on the right is blocked with the synthesized peptide.



Western Blot analysis of various cells using ENX-2 Polyclonal Antibody.



Western Blot analysis of COS7 cells using ENX-2 Polyclonal Antibody.