
Product Name: Endo G-L1 Rabbit Polyclonal Antibody**Catalog #: APRab10460**

For research use only.

Summary

Description	Rabbit polyclonal Antibody
Host	Rabbit
Application	WB,ELISA
Reactivity	Human,Rat,Mouse
Conjugation	Unconjugated
Modification	Unmodified
Isotype	IgG
Clonality	Polyclonal
Form	Liquid
Concentration	1mg/ml
Storage	Aliquot and store at -20°C (valid for 12 months). Avoid freeze/thaw cycles.
Shipping	Ice bags
Buffer	Liquid in PBS containing 50% glycerol, 0.5% protective protein and 0.02% New type preservative N.
Purification	Affinity purification

Application

Dilution Ratio	WB 1:500-1:2000,ELISA 1:20000-1:40000
Molecular Weight	41kDa

Antigen Information

Gene Name	EXOG
Alternative Names	EXOG; ENDOGL1; ENDOGL2; ENGL; Nuclease EXOG; mitochondrial; Endonuclease G-like 1; Endo G-like 1
Gene ID	9941.0
SwissProt ID	Q9Y2C4
Immunogen	The antiserum was produced against synthesized peptide derived from human ENDOGL1. AA range:171-220

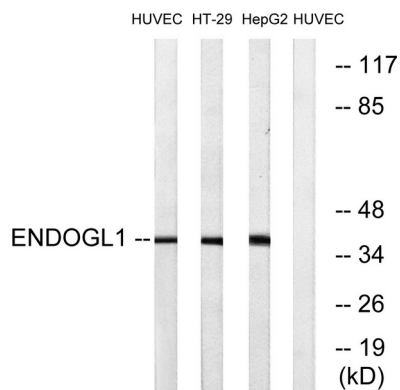
Background

This gene encodes an endo/exonuclease with 5'-3' exonuclease activity. The encoded enzyme catalyzes the hydrolysis of ester linkages at the 5' end of a nucleic acid chain. This enzyme is localized to the mitochondria and may play a role in programmed cell death. Alternatively spliced transcript variants have been described. A pseudogene exists on chromosome 18. [provided by RefSeq, Feb 2009],cofactor:Divalent metal cations.,function:Endo/exonuclease with nicking activity towards supercoiled DNA, a preference for single stranded DNA and 5'-3' exonuclease activity.,miscellaneous:The active site contains 1 hydrated divalent metal cation that has only 1 direct interaction with the protein; all other interactions are via water molecules.,similarity:Belongs to the DNA/RNA non-specific endonuclease family.,subunit:Homodimer.,tissue specificity:Ubiquitous,

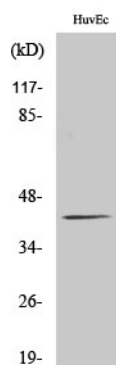
Research Area

Apoptosis_Inhibition;Apoptosis_Mitochondrial;Apoptosis_Overview;

Image Data



Western blot analysis of lysates from HUVEC, HT-29, and HepG2 cells, using ENDOGL1 Antibody. The lane on the right is blocked with the synthesized peptide.



Western Blot analysis of various cells using Endo G-L1 Polyclonal Antibody