

---

**Product Name: EMR4 Rabbit Polyclonal Antibody****Catalog #: APRab10449**

For research use only.

**Summary**

<b>Description</b>	Rabbit polyclonal Antibody
<b>Host</b>	Rabbit
<b>Application</b>	WB,ICC/IF,ELISA
<b>Reactivity</b>	Human,Monkey
<b>Conjugation</b>	Unconjugated
<b>Modification</b>	Unmodified
<b>Isotype</b>	IgG
<b>Clonality</b>	Polyclonal
<b>Form</b>	Liquid
<b>Concentration</b>	1mg/ml
<b>Storage</b>	Aliquot and store at -20°C (valid for 12 months). Avoid freeze/thaw cycles.
<b>Shipping</b>	Ice bags
<b>Buffer</b>	Liquid in PBS containing 50% glycerol, 0.5% protective protein and 0.02% New type preservative N.
<b>Purification</b>	Affinity purification

**Application**

<b>Dilution Ratio</b>	WB 1:500-1:2000,ICC/IF 1:200-1:1000,ELISA 1:10000-1:20000
<b>Molecular Weight</b>	55kDa

**Antigen Information**

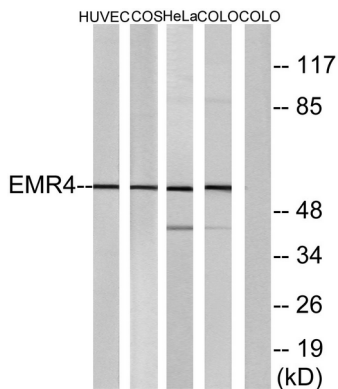
<b>Gene Name</b>	EMR4P EMR4P; EMR4; GPR127; PGR16; Putative EGF-like module-containing mucin-like hormone
<b>Alternative Names</b>	receptor-like 4; EGF-like module receptor 4; G-protein coupled receptor 127; G-protein coupled receptor PGR16
<b>Gene ID</b>	326342.0
<b>SwissProt ID</b>	Q86SQ3
<b>Immunogen</b>	The antiserum was produced against synthesized peptide derived from human EMR4P. AA range:101-150

## Background

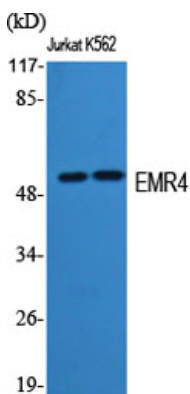
This gene is a member of the EGF-TM7 receptor gene family which is thought to play a role in leukocyte adhesion and migration. In other vertebrates, including nonhuman primates, this gene encodes a protein containing N-terminal EGF domains and a C-terminal transmembrane domain. Sequence evidence for the human gene, however, indicates nucleotide deletion in the genomic sequence would result in frameshift and early termination of translation. A protein expressed by this gene would be soluble rather than expressed on the cell surface. As the encoded protein has not been detected, this gene may represent a transcribed pseudogene. [provided by RefSeq, Aug 2008],

## Research Area

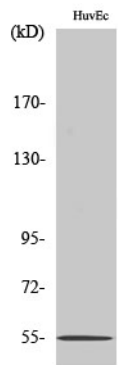
### Image Data



Western blot analysis of lysates from HUVEC cells, COS7 cells, HeLa cells, and COLO205 cells, using EMR4 Antibody. The lane on the right is blocked with the synthesized peptide.



Western Blot analysis of various cells using EMR4 Polyclonal Antibody



Western Blot analysis of COLO205 cells using EMR4 Polyclonal Antibody