

Product Name: EMR1 Rabbit Polyclonal Antibody**Catalog #: APRab10446**

For research use only.

Summary

Description	Rabbit polyclonal Antibody
Host	Rabbit
Application	WB,ELISA
Reactivity	Human,Rat,Mouse
Conjugation	Unconjugated
Modification	Unmodified
Isotype	IgG
Clonality	Polyclonal
Form	Liquid
Concentration	1mg/ml
Storage	Aliquot and store at -20°C (valid for 12 months). Avoid freeze/thaw cycles.
Shipping	Ice bags
Buffer	Liquid in PBS containing 50% glycerol, 0.5% protective protein and 0.02% New type preservative N.
Purification	Affinity purification

Application

Dilution Ratio	WB 1:500-1:2000,ELISA 1:5000-1:10000
Molecular Weight	98kDa

Antigen Information

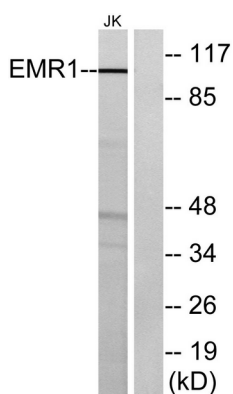
Gene Name	EMR1
Alternative Names	EMR1; TM7LN3; EGF-like module-containing mucin-like hormone receptor-like 1; EGF-like module receptor 1; EMR1 hormone receptor
Gene ID	2015.0
SwissProt ID	Q14246
Immunogen	The antiserum was produced against synthesized peptide derived from human EMR1. AA range:818-867

Background

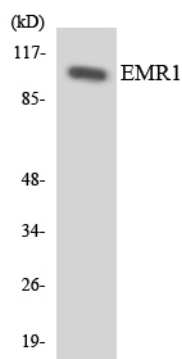
This gene encodes a protein that has a domain resembling seven transmembrane G protein-coupled hormone receptors (7TM receptors) at its C-terminus. The N-terminus of the encoded protein has six EGF-like modules, separated from the transmembrane segments by a serine/threonine-rich domain, a feature reminiscent of mucin-like, single-span, integral membrane glycoproteins with adhesive properties. Multiple alternatively spliced transcript variants encoding different isoforms have been found for this gene. [provided by RefSeq, Jan 2012],alternative products:Comment=Additional isoforms seem to exist,function:Could be involved in cell-cell interactions.,similarity:Belongs to the G-protein coupled receptor 2 family. LN-TM7 subfamily.,similarity:Contains 1 GPS domain.,similarity:Contains 6 EGF-like domains.,tissue specificity:Wide expression; increased levels in peripheral blood mononuclear cells.,

Research Area

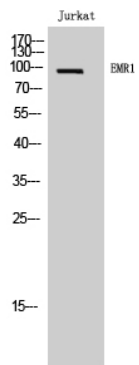
Image Data



Western blot analysis of lysates from Jurkat cells, using EMR1 Antibody. The lane on the right is blocked with the synthesized peptide.



Western blot analysis of the lysates from HUVEC cells using EMR1 antibody.



Western Blot analysis of Jurkat cells using EMR1 Polyclonal Antibody