

Product Name: ELOVL6 Rabbit Polyclonal Antibody**Catalog #: APRab10428**

For research use only.

Summary

Description	Rabbit polyclonal Antibody
Host	Rabbit
Application	WB,ELISA
Reactivity	Human,Mouse,Rat
Conjugation	Unconjugated
Modification	Unmodified
Isotype	IgG
Clonality	Polyclonal
Form	Liquid
Concentration	1mg/ml
Storage	Aliquot and store at -20°C (valid for 12 months). Avoid freeze/thaw cycles.
Shipping	Ice bags
Buffer	Liquid in PBS containing 50% glycerol, 0.5% protective protein and 0.02% New type preservative N.
Purification	Affinity purification

Application

Dilution Ratio	WB 1:500-1:2000,ELISA 1:5000-1:20000
Molecular Weight	35kDa

Antigen Information

Gene Name	ELOVL6 ELOVL6; FACE; LCE; Elongation of very long chain fatty acids protein 6; 3-keto acyl-CoA
Alternative Names	synthase ELOVL6; ELOVL fatty acid elongase 6; ELOVL FA elongase 6; Fatty acid elongase 2; hELO2; Fatty acyl-CoA elongase; Long-chain fatty-acyl elongase
Gene ID	79071.0
SwissProt ID	Q9H5J4
Immunogen	The antiserum was produced against synthesized peptide derived from human ELOVL6. AA range:21-70

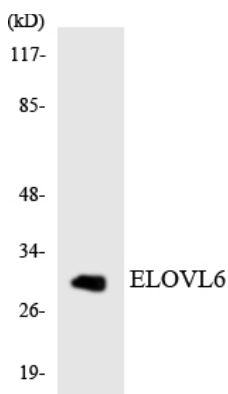
Background

Fatty acid elongases (EC 6.2.1.3), such as ELOVL6, use malonyl-CoA as a 2-carbon donor in the first and rate-limiting step of fatty acid elongation (Moon et al., 2001 [PubMed 11567032]).[supplied by OMIM, Mar 2008],function:Fatty acid elongase specific to C12-C16 saturated and monoinsaturated fatty acids.,similarity:Belongs to the ELO family.,

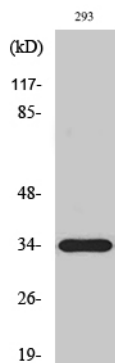
Research Area

Biosynthesis of unsaturated fatty acids;

Image Data



Western blot analysis of the lysates from K562 cells using ELOVL6 antibody.



Western Blot analysis of various cells using ELOVL6 Polyclonal Antibody