

---

**Product Name: Elk-1 Rabbit Polyclonal Antibody****Catalog #: APRab10406**

For research use only.

**Summary**

<b>Description</b>	Rabbit polyclonal Antibody
<b>Host</b>	Rabbit
<b>Application</b>	WB,IHC,ICC/IF,ELISA
<b>Reactivity</b>	Human,Mouse,Rat
<b>Conjugation</b>	Unconjugated
<b>Modification</b>	Unmodified
<b>Isotype</b>	IgG
<b>Clonality</b>	Polyclonal
<b>Form</b>	Liquid
<b>Concentration</b>	1mg/ml
<b>Storage</b>	Aliquot and store at -20°C (valid for 12 months). Avoid freeze/thaw cycles.
<b>Shipping</b>	Ice bags
<b>Buffer</b>	Liquid in PBS containing 50% glycerol, 0.5% protective protein and 0.02% New type preservative N.
<b>Purification</b>	Affinity purification

**Application**

<b>Dilution Ratio</b>	WB 1:500-1:2000,IHC 1:100-1:300,ICC/IF 1:200-1:1000,ELISA 1:5000-1:10000
<b>Molecular Weight</b>	50kDa

**Antigen Information**

<b>Gene Name</b>	ELK1
<b>Alternative Names</b>	ELK1; ETS domain-containing protein Elk-1
<b>Gene ID</b>	2002.0
<b>SwissProt ID</b>	P19419
<b>Immunogen</b>	The antiserum was produced against synthesized peptide derived from human Elk1. AA range:351-400

**Background**

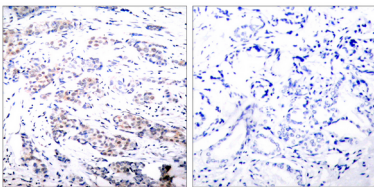
This gene is a member of the Ets family of transcription factors and of the ternary complex factor (TCF) subfamily. Proteins of

the TCF subfamily form a ternary complex by binding to the the serum response factor and the serum response element in the promoter of the c-fos proto-oncogene. The protein encoded by this gene is a nuclear target for the ras-raf-MAPK signaling cascade. This gene produces multiple isoforms by using alternative translational start codons and by alternative splicing. Related pseudogenes have been identified on chromosomes 7 and 14. [provided by RefSeq, Mar 2012],function:Stimulates transcription. Binds to purine-rich DNA sequences. Can form a ternary complex with the serum response factor and the ETS and SRF motifs of the fos serum response element.,PTM:On mitogenic stimulation, phosphorylated on C-terminal serine and threonine residues by MAPK1. Ser-383 and Ser-389 are the preferred sites for MAPK1. In vitro, phosphorylation by MAPK1 potentiates ternary complex formation with the serum responses factors, SRE and SRF. Phosphorylation leads to loss of sumoylation and restores transcriptional activator activity.,PTM:Sumoylation represses transcriptional activator activity as it results in recruitment of HDAC2 to target gene promoters which leads to decreased histone acetylation and reduced transactivator activity. It also regulates nuclear retention.,similarity:Belongs to the ETS family.,similarity:Contains 1 ETS DNA-binding domain.,subunit:Interacts in its sumoylated form with PIAS2/PIASX which enhances its transcriptional activator activity.,tissue specificity:Lung and testis.,

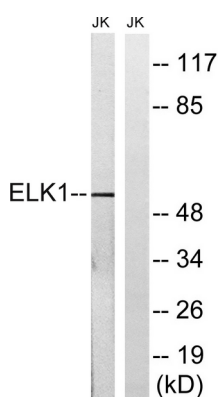
## Research Area

MAPK\_ERK\_Growth;MAPK\_G\_Protein;ErbB\_HER;Focal adhesion;Insulin\_Receptor;GnRH;Prion diseases;Endometrial cancer;

## Image Data



Immunohistochemistry analysis of paraffin-embedded human breast carcinoma tissue, using Elk1 Antibody. The picture on the right is blocked with the synthesized peptide.



Western blot analysis of lysates from JurKat cells, using Elk1 Antibody. The lane on the right is blocked with the synthesized peptide.

Western Blot analysis of HeLa cells using Elk-1 Polyclonal Antibody.

