
Product Name: Eg5 Rabbit Polyclonal Antibody**Catalog #: APRab10331**

For research use only.

Summary

| | |
|----------------------|---|
| Description | Rabbit polyclonal Antibody |
| Host | Rabbit |
| Application | WB,IHC,ICC/IF,ELISA |
| Reactivity | Human,Rat,Mouse |
| Conjugation | Unconjugated |
| Modification | Unmodified |
| Isotype | IgG |
| Clonality | Polyclonal |
| Form | Liquid |
| Concentration | 1mg/ml |
| Storage | Aliquot and store at -20°C (valid for 12 months). Avoid freeze/thaw cycles. |
| Shipping | Ice bags |
| Buffer | Liquid in PBS containing 50% glycerol, 0.5% protective protein and 0.02% New type preservative N. |
| Purification | Affinity purification |

Application

| | |
|-------------------------|---|
| Dilution Ratio | WB 1:500-1:2000,IHC 1:100-1:300,ICC/IF 1:200-1:1000,ELISA 1:10000-1:20000 |
| Molecular Weight | 119kDa |

Antigen Information

| | |
|--------------------------|--|
| Gene Name | KIF11 KIF11; EG5; KNSL1; TRIP5; Kinesin-like protein KIF11; Kinesin-like protein 1; Kinesin-like spindle protein HKSP |
| Alternative Names | Kinesin-related motor protein Eg5; Thyroid receptor-interacting protein 5; TR-interacting protein 5; TRIP-5 |
| Gene ID | 3832.0 |
| SwissProt ID | P52732 |
| Immunogen | The antiserum was produced against synthesized peptide derived from human KIF11/Eg5. AA range:892-941 |

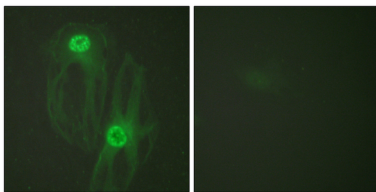
Background

kinesin family member 11(KIF11) Homo sapiens This gene encodes a motor protein that belongs to the kinesin-like protein family. Members of this protein family are known to be involved in various kinds of spindle dynamics. The function of this gene product includes chromosome positioning, centrosome separation and establishing a bipolar spindle during cell mitosis. [provided by RefSeq, Jul 2008],function:Motor protein required for establishing a bipolar spindle. Blocking of KIF11 prevents centrosome migration and arrest cells in mitosis with monoastral microtubule arrays.,PTM:Phosphorylated exclusively on serine during S phase, but on both serine and Thr-926 during mitosis, so controlling the association of KIF11 with the spindle apparatus (probably during early prophase). Phosphorylated upon DNA damage, probably by ATM or ATR.,similarity:Belongs to the kinesin-like protein family. BimC subfamily.,similarity:Contains 1 kinesin-motor domain.,subunit:Interacts with the thyroid hormone receptor in the presence of thyroid hormone. Component of a large chromatin remodeling complex, at least composed of MYSM1, PCAF, RBM10 and KIF11/TRIP5.,

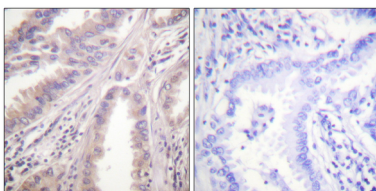
Research Area

Signal Transduction

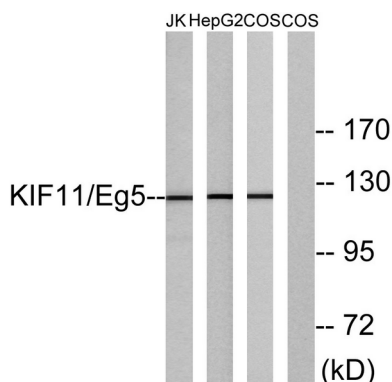
Image Data



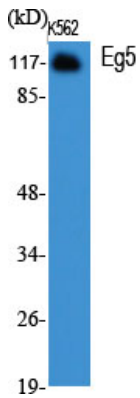
Immunofluorescence analysis of HeLa cells, using KIF11/Eg5 Antibody. The picture on the right is blocked with the synthesized peptide.



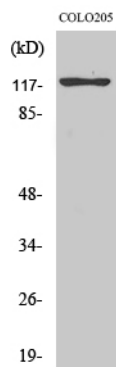
Immunohistochemistry analysis of paraffin-embedded human lung carcinoma tissue, using KIF11/Eg5 Antibody. The picture on the right is blocked with the synthesized peptide.



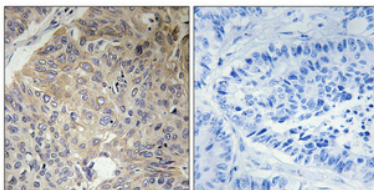
Western blot analysis of lysates from Jurkat, HepG2, and COS cells, using KIF11/Eg5 Antibody. The lane on the right is blocked with the synthesized peptide.



Western Blot analysis of various cells using Eg5 Polyclonal Antibody.



Western Blot analysis of COLO205 cells using Eg5 Polyclonal Antibody.



Immunohistochemical analysis of paraffin-embedded Human lung cancer. Antibody was diluted at 1:100 (4°,overnight) . High-pressure and temperature Tris-EDTA,pH8.0 was used for antigen retrieval. Negetive contrl (right) obtaned from antibody was pre-absorbed by immunogen peptide.