
Product Name: EDG-7 Rabbit Polyclonal Antibody**Catalog #: APRab10303**

For research use only.

Summary

Description	Rabbit polyclonal Antibody
Host	Rabbit
Application	WB,IHC,ICC/IF,ELISA
Reactivity	Human,Rat,Mouse
Conjugation	Unconjugated
Modification	Unmodified
Isotype	IgG
Clonality	Polyclonal
Form	Liquid
Concentration	1mg/ml
Storage	Aliquot and store at -20°C (valid for 12 months). Avoid freeze/thaw cycles.
Shipping	Ice bags
Buffer	Liquid in PBS containing 50% glycerol, 0.5% protective protein and 0.02% New type preservative N.
Purification	Affinity purification

Application

Dilution Ratio	WB 1:500-1:2000,IHC 1:100-1:300,ICC/IF 1:200-1:1000,ELISA 1:20000-1:40000
Molecular Weight	47kDa

Antigen Information

Gene Name	LPAR3
Alternative Names	LPAR3; EDG7; LPA3; Lysophosphatidic acid receptor 3; LPA receptor 3; LPA-3; Lysophosphatidic acid receptor Edg-7
Gene ID	23566.0
SwissProt ID	Q9UBY5
Immunogen	The antiserum was produced against synthesized peptide derived from human EDG7. AA range:281-330

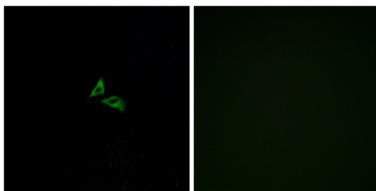
Background

lysophosphatidic acid receptor 3(LPAR3) Homo sapiens This gene encodes a member of the G protein-coupled receptor family, as well as the EDG family of proteins. This protein functions as a cellular receptor for lysophosphatidic acid and mediates lysophosphatidic acid-evoked calcium mobilization. This receptor couples predominantly to G(q/11) alpha proteins. [provided by RefSeq, Jul 2008],function:Receptor for lysophosphatidic acid (LPA), a mediator of diverse cellular activities. May play a role in the development of ovarian cancer. Seems to be coupled to the G(i)/G(o) and G(q) families of heteromeric G proteins.,similarity:Belongs to the G-protein coupled receptor 1 family.,tissue specificity:Most abundantly expressed in prostate, testes, pancreas, and heart, with moderate levels in lung and ovary. No detectable expression in brain, placenta, liver, skeletal muscle, kidney, spleen, thymus, small intestine, colon, or peripheral blood leukocytes.,

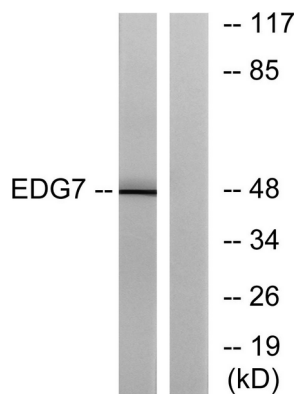
Research Area

Neuroactive ligand-receptor interaction;

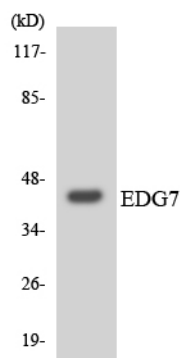
Image Data



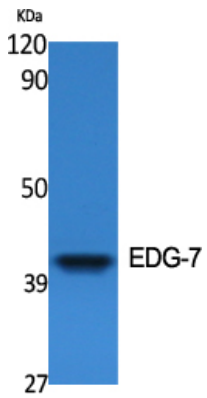
Immunofluorescence analysis of A549 cells, using EDG7 Antibody. The picture on the right is blocked with the synthesized peptide.



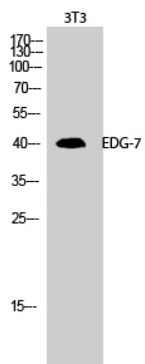
Western blot analysis of lysates from Jurkat cells, using EDG7 Antibody. The lane on the right is blocked with the synthesized peptide.



Western blot analysis of the lysates from 293 cells using EDG7 antibody.



Western Blot analysis of various cells using EDG-7 Polyclonal Antibody



Western Blot analysis of 3T3 cells using EDG-7 Polyclonal Antibody