

---

**Product Name: EDG-3 Rabbit Polyclonal Antibody****Catalog #: APRab10299**

For research use only.

**Summary**

<b>Description</b>	Rabbit polyclonal Antibody
<b>Host</b>	Rabbit
<b>Application</b>	WB,ICC/IF,ELISA
<b>Reactivity</b>	Human,Mouse,Rat
<b>Conjugation</b>	Unconjugated
<b>Modification</b>	Unmodified
<b>Isotype</b>	IgG
<b>Clonality</b>	Polyclonal
<b>Form</b>	Liquid
<b>Concentration</b>	1mg/ml
<b>Storage</b>	Aliquot and store at -20°C (valid for 12 months). Avoid freeze/thaw cycles.
<b>Shipping</b>	Ice bags
<b>Buffer</b>	Liquid in PBS containing 50% glycerol, 0.5% protective protein and 0.02% New type preservative N.
<b>Purification</b>	Affinity purification

**Application**

<b>Dilution Ratio</b>	WB 1:500-1:2000,ICC/IF 1:200-1:1000,ELISA 1:20000-1:40000
<b>Molecular Weight</b>	42kDa

**Antigen Information**

<b>Gene Name</b>	S1PR3
<b>Alternative Names</b>	S1PR3; EDG3; Sphingosine 1-phosphate receptor 3; S1P receptor 3; S1P3; Endothelial differentiation G-protein coupled receptor 3; Sphingosine 1-phosphate receptor Edg-3; S1P receptor Edg-3
<b>Gene ID</b>	1903.0
<b>SwissProt ID</b>	Q99500
<b>Immunogen</b>	The antiserum was produced against synthesized peptide derived from human EDG3. AA range:115-164

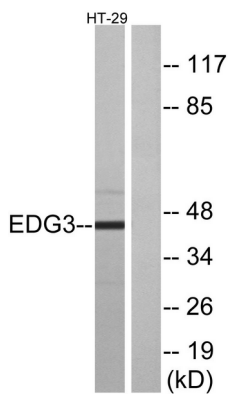
## Background

This gene encodes a member of the EDG family of receptors, which are G protein-coupled receptors. This protein has been identified as a functional receptor for sphingosine 1-phosphate and likely contributes to the regulation of angiogenesis and vascular endothelial cell function. [provided by RefSeq, Jul 2008],function:Receptor for the lysosphingolipid sphingosine 1-phosphate (S1P). S1P is a bioactive lysophospholipid that elicits diverse physiological effect on most types of cells and tissues. When expressed in rat HTC4 hepatoma cells, is capable of mediating S1P-induced cell proliferation and suppression of apoptosis.,similarity:Belongs to the G-protein coupled receptor 1 family.,tissue specificity:Expressed in all tissues, but most abundantly in heart, placenta, kidney, and liver.,

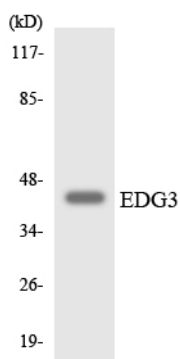
## Research Area

Neuroactive ligand-receptor interaction;

## Image Data



Western blot analysis of lysates from HT-29 cells, using EDG3 Antibody. The lane on the right is blocked with the synthesized peptide.



Western blot analysis of the lysates from HepG2 cells using EDG3 antibody.

Western Blot analysis of HT-29 cells using EDG-3 Polyclonal Antibody

