

Product Name: EDEM3 Rabbit Polyclonal Antibody**Catalog #: APRab10293**

For research use only.

Summary

Description	Rabbit polyclonal Antibody
Host	Rabbit
Application	WB,ELISA
Reactivity	Human,Mouse
Conjugation	Unconjugated
Modification	Unmodified
Isotype	IgG
Clonality	Polyclonal
Form	Liquid
Concentration	1mg/ml
Storage	Aliquot and store at -20°C (valid for 12 months). Avoid freeze/thaw cycles.
Shipping	Ice bags
Buffer	Liquid in PBS containing 50% glycerol, and 0.02% New type preservative N.
Purification	Affinity purification

Application

Dilution Ratio	WB 1:500-1:2000,ELISA 1:5000-1:20000
Molecular Weight	102kDa

Antigen Information

Gene Name	EDEM3 C1orf22
Alternative Names	
Gene ID	80267.0
SwissProt ID	Q9BZQ6
Immunogen	Synthesized peptide derived from part region of human protein

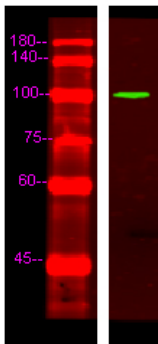
Background

Quality control in the endoplasmic reticulum (ER) ensures that only properly folded proteins are retained in the cell through recognition and degradation of misfolded or unassembled proteins. EDEM3 belongs to a group of proteins that accelerate degradation of misfolded glycoproteins in the ER (Hirao et al., 2006 [PubMed 16431915]).[supplied by OMIM, Mar

2008],domain:Contains a protease-associated domain (PA) of unknown function.,function:Involved in endoplasmic reticulum-associated degradation (ERAD). Accelerates the glycoprotein ERAD by proteasomes. This process depends on mannose-trimming from the N-glycans. Seems to have alpha 1,2-mannosidase activity.,PTM:N-glycosylated.,similarity:Belongs to the glycosyl hydrolase 47 family.,similarity:Contains 1 PA (protease associated) domain.,

Research Area

Image Data



Western Blot analysis of HeLa lysis, using primary antibody at 1:1000 dilution. Secondary antibody was diluted at 1:10000