
Product Name: EBP2 Rabbit Polyclonal Antibody**Catalog #: APRab10276**

For research use only.

Summary

Description	Rabbit polyclonal Antibody
Host	Rabbit
Application	WB,ELISA
Reactivity	Human,Mouse
Conjugation	Unconjugated
Modification	Unmodified
Isotype	IgG
Clonality	Polyclonal
Form	Liquid
Concentration	1mg/ml
Storage	Aliquot and store at -20°C (valid for 12 months). Avoid freeze/thaw cycles.
Shipping	Ice bags
Buffer	Liquid in PBS containing 50% glycerol, and 0.02% New type preservative N.
Purification	Affinity purification

Application

Dilution Ratio	WB 1:500-1:2000,ELISA 1:5000-1:20000
Molecular Weight	33kDa

Antigen Information

Gene Name	EBNA1BP2 EBP2
Alternative Names	
Gene ID	10969.0
SwissProt ID	Q99848
Immunogen	Synthesized peptide derived from human protein . at AA range: 140-220

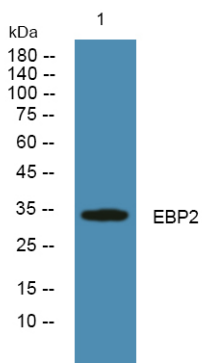
Background

function:Required for the processing of the 27S pre-rRNA.,similarity:Belongs to the EBP2 family.,subunit:Specifically interacts with EBV EBNA1. The EBNA1-EBP2 interaction is important for the stable segregation of EBV episomes during cell division.,tissue specificity:Ubiquitous.,function:Required for the processing of the 27S pre-rRNA.,similarity:Belongs to the EBP2

family,subunit:Specifically interacts with EBV EBNA1. The EBNA1-EBP2 interaction is important for the stable segregation of EBV episomes during cell division.,tissue specificity:Ubiquitous.,

Research Area

Image Data



Western blot analysis of lysates from PC12 cells, EBP2 Rabbit Polyclonal Antibody was diluted at 1:1000, 4°over night