
Product Name: EAT-2 Rabbit Polyclonal Antibody**Catalog #: APRab10269**

For research use only.

Summary

Description	Rabbit polyclonal Antibody
Host	Rabbit
Application	IHC,ICC/IF,ELISA
Reactivity	Human,Rat,Mouse
Conjugation	Unconjugated
Modification	Unmodified
Isotype	IgG
Clonality	Polyclonal
Form	Liquid
Concentration	1mg/ml
Storage	Aliquot and store at -20°C (valid for 12 months). Avoid freeze/thaw cycles.
Shipping	Ice bags
Buffer	Liquid in PBS containing 50% glycerol, 0.5% protective protein and 0.02% New type preservative N.
Purification	Affinity purification

Application

Dilution Ratio IHC 1:100-1:300,ICC/IF 1:50-1:200,ELISA 1:20000-1:40000

Molecular Weight

Antigen Information

Gene Name	SH2D1B
Alternative Names	SH2D1B; EAT2; SH2 domain-containing protein 1B; EWS/FLI1-activated transcript 2; EAT-2
Gene ID	117157.0
SwissProt ID	O14796
Immunogen	The antiserum was produced against synthesized peptide derived from human SH2D1B. AA range:71-120

Background

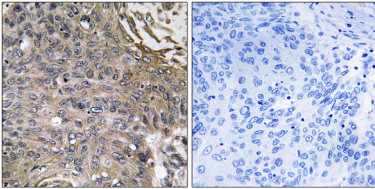
By binding phosphotyrosines through its free SRC (MIM 190090) homology-2 (SH2) domain, EAT2 regulates signal

transduction through receptors expressed on the surface of antigen-presenting cells (Morra et al., 2001 [PubMed 11689425]). [supplied by OMIM, Mar 2008],function:Plays a role in controlling signal transduction through at least four receptors, CD84, CD150, CD229 and CD244, expressed on the surface of professional antigen-presenting cells.,similarity:Contains 1 SH2 domain.,subunit:Binds to the phosphorylated receptors CD84, CD150, CD229 and CD244. Does not bind to non-phosphorylated CD150.,

Research Area

Natural killer cell mediated cytotoxicity;

Image Data



Immunohistochemistry analysis of paraffin-embedded human lung carcinoma, using SH2D1B Antibody. The picture on the right is blocked with the synthesized peptide.