
Product Name: DUSP19 Rabbit Polyclonal Antibody**Catalog #: APRab10203**

For research use only.

Summary

Description	Rabbit polyclonal Antibody
Host	Rabbit
Application	WB,ICC/IF,ELISA
Reactivity	Human,Monkey
Conjugation	Unconjugated
Modification	Unmodified
Isotype	IgG
Clonality	Polyclonal
Form	Liquid
Concentration	1mg/ml
Storage	Aliquot and store at -20°C (valid for 12 months). Avoid freeze/thaw cycles.
Shipping	Ice bags
Buffer	Liquid in PBS containing 50% glycerol, 0.5% protective protein and 0.02% New type preservative N.
Purification	Affinity purification

Application

Dilution Ratio	WB 1:500-1:2000,ICC/IF 1:200-1:1000,ELISA 1:10000-1:20000
Molecular Weight	28kDa

Antigen Information

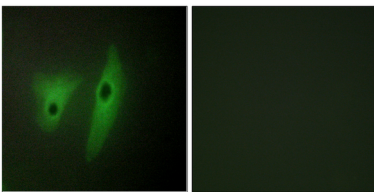
Gene Name	DUSP19
Alternative Names	DUSP19; DUSP17; LMWDSP3; SKRP1; Dual specificity protein phosphatase 19; Dual specificity phosphatase TS-DSP1; Low molecular weight dual specificity phosphatase 3; LMW-DSP3; Protein phosphatase SKRP1; Stress-activated protein kinase pathway
Gene ID	142679.0
SwissProt ID	Q8WTR2
Immunogen	The antiserum was produced against synthesized peptide derived from human DUSP19. AA range:111-160

Background

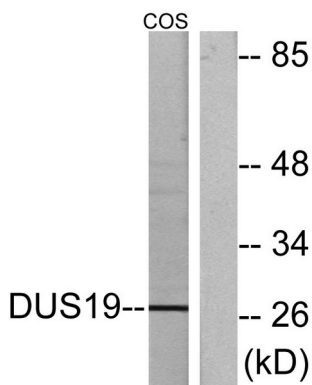
dual specificity phosphatase 19(DUSP19) Homo sapiens Dual-specificity phosphatases (DUSPs) constitute a large heterogeneous subgroup of the type I cysteine-based protein-tyrosine phosphatase superfamily. DUSPs are characterized by their ability to dephosphorylate both tyrosine and serine/threonine residues. They have been implicated as major modulators of critical signaling pathways. DUSP19 contains a variation of the consensus DUSP C-terminal catalytic domain, with the last serine residue replaced by alanine, and lacks the N-terminal CH2 domain found in the MKP (mitogen-activated protein kinase phosphatase) class of DUSPs (see MIM 600714) (summary by Patterson et al., 2009 [PubMed 19228121]).[supplied by OMIM, Dec 2009],catalytic activity:A phosphoprotein + H(2)O = a protein + phosphate.,catalytic activity:Protein tyrosine phosphate + H(2)O = protein tyrosine + phosphate.,function:Has a dual specificity toward Ser/Thr and Tyr-containing proteins.,similarity:Belongs to the protein-tyrosine phosphatase family. Non-receptor class dual specificity subfamily.,similarity:Contains 1 tyrosine-protein phosphatase domain.,tissue specificity:Expressed in the heart, lung, liver, and pancreas. The expression level in the pancreas is the highest.,

Research Area

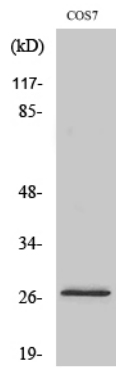
Image Data



Immunofluorescence analysis of HeLa cells, using DUSP19 Antibody. The picture on the right is blocked with the synthesized peptide.



Western blot analysis of lysates from COS7 cells, using DUSP19 Antibody. The lane on the right is blocked with the synthesized peptide.



Western Blot analysis of various cells using DUSP19 Polyclonal Antibody