

Product Name: DSCR 1 Rabbit Polyclonal Antibody**Catalog #: APRab10173**

For research use only.

Summary

Description	Rabbit polyclonal Antibody
Host	Rabbit
Application	WB,ELISA
Reactivity	Human,Mouse,Rat
Conjugation	Unconjugated
Modification	Unmodified
Isotype	IgG
Clonality	Polyclonal
Form	Liquid
Concentration	1mg/ml
Storage	Aliquot and store at -20°C (valid for 12 months). Avoid freeze/thaw cycles.
Shipping	Ice bags
Buffer	Liquid in PBS containing 50% glycerol, 0.5% protective protein and 0.02% New type preservative N.
Purification	Affinity purification

Application

Dilution Ratio	WB 1:500-1:2000,ELISA 1:5000-1:20000
Molecular Weight	22kDa

Antigen Information

Gene Name	RCAN1 RCAN1; ADAPT78; CSP1; DSC1; DSCR1; Calcipressin-1; Adapt78; Down syndrome critical
Alternative Names	region protein 1; Myocyte-enriched calcineurin-interacting protein 1; MCIP1; Regulator of calcineurin 1
Gene ID	1827.0
SwissProt ID	P53805
Immunogen	The antiserum was produced against synthesized peptide derived from human RCAN1. AA range:201-250

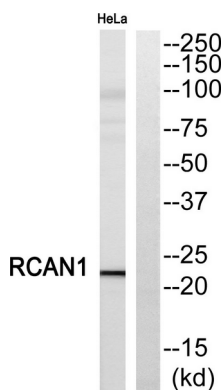
Background

The protein encoded by this gene interacts with calcineurin A and inhibits calcineurin-dependent signaling pathways, possibly affecting central nervous system development. This gene is located in the minimal candidate region for the Down syndrome phenotype, and is overexpressed in the brain of Down syndrome fetuses. Chronic overexpression of this gene may lead to neurofibrillary tangles such as those associated with Alzheimer disease. Alternative splicing results in multiple transcript variants. [provided by RefSeq, Nov 2013],function:Inhibits calcineurin-dependent transcriptional responses by binding to the catalytic domain of calcineurin A. Could play a role during central nervous system development.,induction:By calcium.,similarity:Belongs to the RCAN family.,tissue specificity:Highly expressed heart, brain and skeletal muscle. Also expressed in all other tissues.,

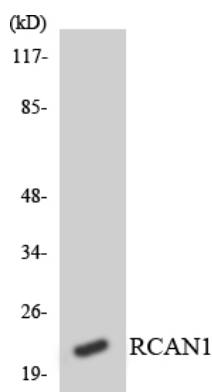
Research Area

B_Cell_Antigen

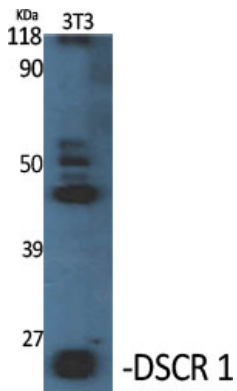
Image Data



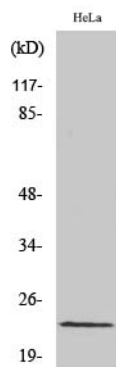
Western blot analysis of RCAN1 Antibody. The lane on the right is blocked with the RCAN1 peptide.



Western blot analysis of the lysates from HT-29 cells using RCAN1 antibody.



Western Blot analysis of various cells using DSCR 1 Polyclonal Antibody diluted at 1 : 1000



Western Blot analysis of HeLa cells using DSCR 1 Polyclonal Antibody diluted at 1 : 1000