
Product Name: DRS-1 Rabbit Polyclonal Antibody**Catalog #: APRab10167**

For research use only.

Summary

Description	Rabbit polyclonal Antibody
Host	Rabbit
Application	WB,IHC,ICC/IF,ELISA
Reactivity	Human,Rat,Mouse
Conjugation	Unconjugated
Modification	Unmodified
Isotype	IgG
Clonality	Polyclonal
Form	Liquid
Concentration	1mg/ml
Storage	Aliquot and store at -20°C (valid for 12 months). Avoid freeze/thaw cycles.
Shipping	Ice bags
Buffer	Liquid in PBS containing 50% glycerol, 0.5% protective protein and 0.02% New type preservative N.
Purification	Affinity purification

Application

Dilution Ratio	WB 1:500-1:2000,IHC 1:100-1:300,ICC/IF 1:50-1:200,ELISA 1:10000-1:20000
Molecular Weight	40kDa

Antigen Information

Gene Name	ECI2 ECI2; DRS1; HCA88; PECl; Enoyl-CoA delta isomerase 2; mitochondrial; DRS-1;
Alternative Names	Delta(3),delta(2)-enoyl-CoA isomerase; D3,D2-enoyl-CoA isomerase; Diazepam-binding inhibitor-related protein 1; DBI-related protein 1; Dodecenoyl-CoA isomerase; Hep
Gene ID	10455.0
SwissProt ID	O75521
Immunogen	The antiserum was produced against synthesized peptide derived from human PECl. AA range:73-122

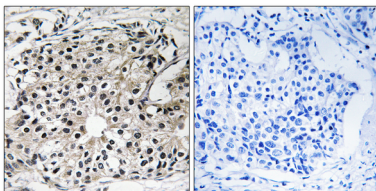
Background

This gene encodes a member of the hydratase/isomerase superfamily. The protein encoded is a key mitochondrial enzyme involved in beta-oxidation of unsaturated fatty acids. It catalyzes the transformation of 3-cis and 3-trans-enoyl-CoA esters arising during the stepwise degradation of cis-, mono-, and polyunsaturated fatty acids to the 2-trans-enoyl-CoA intermediates. Alternatively spliced transcript variants have been described. [provided by RefSeq, Aug 2011],catalytic activity: (3Z)-dodec-3-enoyl-CoA = (2E)-dodec-2-enoyl-CoA.,function:Able to isomerize both 3-cis and 3-trans double bonds into the 2-trans form in a range of enoyl-CoA species.,similarity:Contains 1 ACB (acyl-CoA-binding) domain.,similarity:In the C-terminal section; belongs to the enoyl-CoA hydratase/isomerase family.,tissue specificity:Abundant in heart, skeletal muscle and liver.,

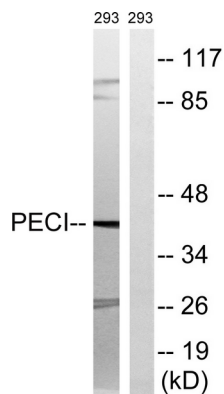
Research Area

Fatty acid metabolism;

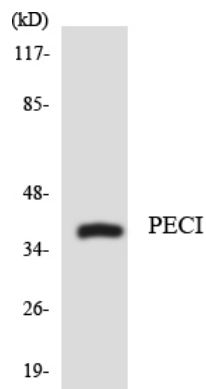
Image Data



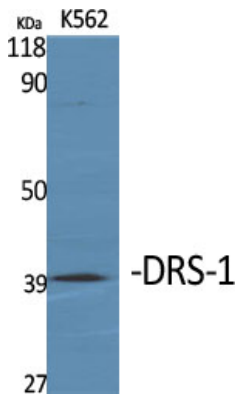
Immunohistochemistry analysis of paraffin-embedded human breast carcinoma tissue, using PECl Antibody. The picture on the right is blocked with the synthesized peptide.



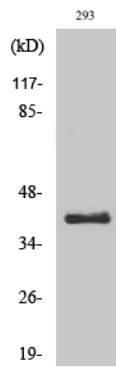
Western blot analysis of lysates from 293 cells, using PECl Antibody. The lane on the right is blocked with the synthesized peptide.



Western blot analysis of the lysates from COLO205 cells using PECl antibody.



Western Blot analysis of various cells using DRS-1 Polyclonal Antibody



Western Blot analysis of 293 cells using DRS-1 Polyclonal Antibody