

**Product Name: DRAK2 Rabbit Polyclonal Antibody****Catalog #: AP Rab10154**

For research use only.

**Summary**

<b>Description</b>	Rabbit polyclonal Antibody
<b>Host</b>	Rabbit
<b>Application</b>	WB,IHC,ICC/IF,ELISA
<b>Reactivity</b>	Human,Mouse,Rat
<b>Conjugation</b>	Unconjugated
<b>Modification</b>	Unmodified
<b>Isotype</b>	IgG
<b>Clonality</b>	Polyclonal
<b>Form</b>	Liquid
<b>Concentration</b>	1mg/ml
<b>Storage</b>	Aliquot and store at -20°C (valid for 12 months). Avoid freeze/thaw cycles.
<b>Shipping</b>	Ice bags
<b>Buffer</b>	Liquid in PBS containing 50% glycerol, 0.5% protective protein and 0.02% New type preservative N.
<b>Purification</b>	Affinity purification

**Application**

<b>Dilution Ratio</b>	WB 1:500-1:2000,IHC 1:100-1:300,ICC/IF 1:50-1:200,ELISA 1:20000-1:40000
<b>Molecular Weight</b>	45kDa

**Antigen Information**

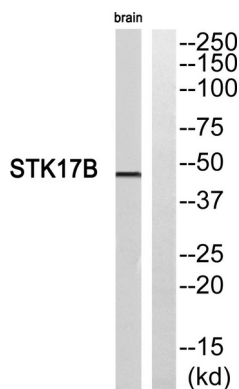
<b>Gene Name</b>	STK17B
<b>Alternative Names</b>	STK17B; DRAK2; Serine/threonine-protein kinase 17B; DAP kinase-related apoptosis-inducing protein kinase 2
<b>Gene ID</b>	9262.0
<b>SwissProt ID</b>	O94768
<b>Immunogen</b>	The antiserum was produced against synthesized peptide derived from human STK17B. AA range:251-300

**Background**

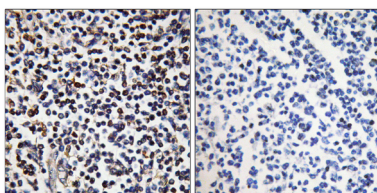
catalytic activity:ATP + a protein = ADP + a phosphoprotein.,function:Acts as a positive regulator of apoptosis.,PTM:Autophosphorylated.,similarity:Belongs to the protein kinase superfamily.,similarity:Belongs to the protein kinase superfamily. CAMK Ser/Thr protein kinase family. DAP kinase subfamily.,similarity:Contains 1 protein kinase domain.,subunit:Interacts with CHP causing CHP to translocate from the Golgi to the nucleus.,tissue specificity:Highly expressed in placenta, lung, pancreas. Lower levels in heart, brain, liver, skeletal muscle and kidney.,catalytic activity:ATP + a protein = ADP + a phosphoprotein.,function:Acts as a positive regulator of apoptosis.,PTM:Autophosphorylated.,similarity:Belongs to the protein kinase superfamily.,similarity:Belongs to the protein kinase superfamily. CAMK Ser/Thr protein kinase family. DAP kinase subfamily.,similarity:Contains 1 protein kinase domain.,subunit:Interacts with CHP causing CHP to translocate from the Golgi to the nucleus.,tissue specificity:Highly expressed in placenta, lung, pancreas. Lower levels in heart, brain, liver, skeletal muscle and kidney.,

## Research Area

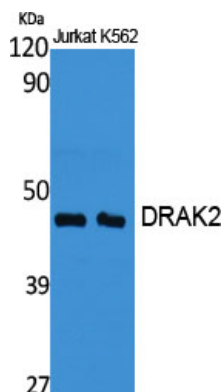
### Image Data



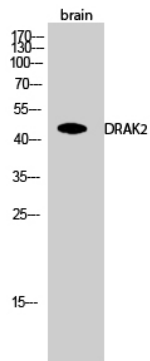
Western blot analysis of STK17B Antibody. The lane on the right is blocked with the STK17B peptide.



Immunohistochemistry analysis of paraffin-embedded human tonsil, using STK17B Antibody. The lane on the right is blocked with the STK17B peptide.



Western Blot analysis of various cells using DRAX2 Polyclonal Antibody cells nucleus extracted by Minute TM Cytoplasmic and Nuclear Fractionation kit (SC-003, Invent biotech, MN, USA).



Western Blot analysis of brain cells using DRAK2 Polyclonal Antibody cells nucleus extracted by Minute TM Cytoplasmic and Nuclear Fractionation kit (SC-003, Invent biotech, MN, USA) .