

---

**Product Name: DRA Rabbit Polyclonal Antibody****Catalog #: APRab10153**

For research use only.

**Summary**

<b>Description</b>	Rabbit polyclonal Antibody
<b>Host</b>	Rabbit
<b>Application</b>	WB,ELISA
<b>Reactivity</b>	Human,Mouse,Rat
<b>Conjugation</b>	Unconjugated
<b>Modification</b>	Unmodified
<b>Isotype</b>	IgG
<b>Clonality</b>	Polyclonal
<b>Form</b>	Liquid
<b>Concentration</b>	1mg/ml
<b>Storage</b>	Aliquot and store at -20°C (valid for 12 months). Avoid freeze/thaw cycles.
<b>Shipping</b>	Ice bags
<b>Buffer</b>	Liquid in PBS containing 50% glycerol, 0.5% protective protein and 0.02% New type preservative N.
<b>Purification</b>	Affinity purification

**Application**

<b>Dilution Ratio</b>	WB 1:500-1:2000,ELISA 1:10000-1:20000
<b>Molecular Weight</b>	84kDa

**Antigen Information**

<b>Gene Name</b>	SLC26A3
<b>Alternative Names</b>	SLC26A3; DRA; Chloride anion exchanger; Down-regulated in adenoma; Protein DRA; Solute carrier family 26 member 3
<b>Gene ID</b>	1811.0
<b>SwissProt ID</b>	P40879
<b>Immunogen</b>	Synthesized peptide derived from the C-terminal region of human DRA.

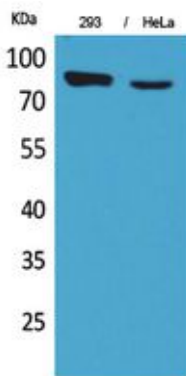
**Background**

The protein encoded by this gene is a transmembrane glycoprotein that transports chloride ions across the cell membrane in

exchange for bicarbonate ions. It is localized to the mucosa of the lower intestinal tract, particularly to the apical membrane of columnar epithelium and some goblet cells. The protein is essential for intestinal chloride absorption, and mutations in this gene have been associated with congenital chloride diarrhea. [provided by RefSeq, Oct 2008],developmental stage:Expression is significantly decreased in adenomas (polyps) and adenocarcinomas of the colon.,disease:Defects in SLC26A3 are the cause of congenital chloride diarrhea (CLD) [MIM:214700]. CLD is a disease characterized by voluminous watery stools containing an excess of chloride. The children with this disease are often premature.,function:Chloride/bicarbonate exchanger. Involved in absorption of in the colon. Helps mediate electrolyte and fluid absorption.,PTM:Phosphorylated upon DNA damage, probably by ATM or ATR.,similarity:Belongs to the SLC26A/SulP transporter (TC 2.A.53) family.,similarity:Contains 1 STAS domain.,subunit:Interacts with PDZK1.,

## Research Area

## Image Data



Western Blot analysis of 293, HeLa cells using DRA Polyclonal Antibody.. Secondary antibody was diluted at 1:20000