

---

**Product Name: Dok-5 Rabbit Polyclonal Antibody****Catalog #: APRab10109**

For research use only.

**Summary**

<b>Description</b>	Rabbit polyclonal Antibody
<b>Host</b>	Rabbit
<b>Application</b>	WB,ELISA
<b>Reactivity</b>	Human,Mouse
<b>Conjugation</b>	Unconjugated
<b>Modification</b>	Unmodified
<b>Isotype</b>	IgG
<b>Clonality</b>	Polyclonal
<b>Form</b>	Liquid
<b>Concentration</b>	1mg/ml
<b>Storage</b>	Aliquot and store at -20°C (valid for 12 months). Avoid freeze/thaw cycles.
<b>Shipping</b>	Ice bags
<b>Buffer</b>	Liquid in PBS containing 50% glycerol, 0.5% protective protein and 0.02% New type preservative N.
<b>Purification</b>	Affinity purification

**Application**

<b>Dilution Ratio</b>	WB 1:500-1:2000,ELISA 1:10000-1:20000
<b>Molecular Weight</b>	36kDa

**Antigen Information**

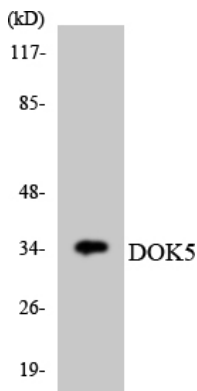
<b>Gene Name</b>	DOK5
<b>Alternative Names</b>	DOK5; C20orf180; Docking protein 5; Downstream of tyrosine kinase 5; Insulin receptor substrate 6; IRS-6; IRS6
<b>Gene ID</b>	55816.0
<b>SwissProt ID</b>	Q9P104
<b>Immunogen</b>	The antiserum was produced against synthesized peptide derived from human DOK5. AA range:101-150

**Background**

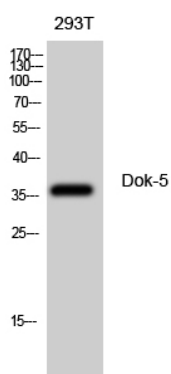
docking protein 5(DOK5) Homo sapiens The protein encoded by this gene is a member of the DOK family of membrane proteins, which are adapter proteins involved in signal transduction. The encoded protein interacts with phosphorylated receptor tyrosine kinases to mediate neurite outgrowth and activation of the MAP kinase pathway. Unlike other DOK family proteins, this protein does not interact with RASGAP. This protein is up-regulated in patients with systemic sclerosis and is associated with fibrosis induced by insulin-like growth factor binding protein 5. Alternative splicing of this gene results in multiple transcript variants. [provided by RefSeq, Jun 2014],domain:PTB domain mediates receptor interaction.,function:DOK proteins are enzymatically inert adaptor or scaffolding proteins. They provide a docking platform for the assembly of multimolecular signaling complexes. DOK5 functions in RET-mediated neurite outgrowth and plays a positive role in activation of the MAP kinase pathway. Putative link with downstream effectors of RET in neuronal differentiation.,PTM:Phosphorylated on tyrosine residues in response to insulin, IGF1 and GDNF.,similarity:Belongs to the DOK family. Type B subfamily.,similarity:Contains 1 IRS-type PTB domain.,similarity:Contains 1 PH domain.,subunit:Interacts with phosphorylated RET. In contrast to other DOK proteins, it does not interact with RASGAP.,tissue specificity:Highest expression in skeletal muscle, lower in brain, heart and kidney. Also detected in activated peripheral blood T-lymphocytes.,

## Research Area

### Image Data



Western blot analysis of the lysates from HT-29 cells using DOK5 antibody.



Western Blot analysis of 293T cells using Dok-5 Polyclonal Antibody diluted at 1 : 500