
Product Name: Dok-2 Rabbit Polyclonal Antibody**Catalog #: APRab10106**

For research use only.

Summary

Description	Rabbit polyclonal Antibody
Host	Rabbit
Application	WB,IHC,ICC/IF,ELISA
Reactivity	Human,Mouse
Conjugation	Unconjugated
Modification	Unmodified
Isotype	IgG
Clonality	Polyclonal
Form	Liquid
Concentration	1mg/ml
Storage	Aliquot and store at -20°C (valid for 12 months). Avoid freeze/thaw cycles.
Shipping	Ice bags
Buffer	Liquid in PBS containing 50% glycerol, 0.5% protective protein and 0.02% New type preservative N.
Purification	Affinity purification

Application

Dilution Ratio	WB 1:500-1:2000,IHC 1:100-1:300,ICC/IF 1:200-1:1000,ELISA 1:10000-1:20000
Molecular Weight	46kDa

Antigen Information

Gene Name	DOK2
Alternative Names	DOK2; Docking protein 2; Downstream of tyrosine kinase 2; p56(dok-2)
Gene ID	9046.0
SwissProt ID	O60496
Immunogen	The antiserum was produced against synthesized peptide derived from human p56 Dok-2. AA range:266-315

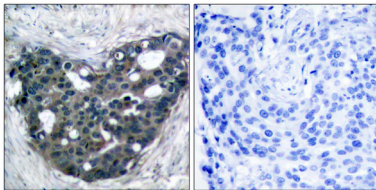
Background

docking protein 2(DOK2) Homo sapiens The protein encoded by this gene is constitutively tyrosine phosphorylated in

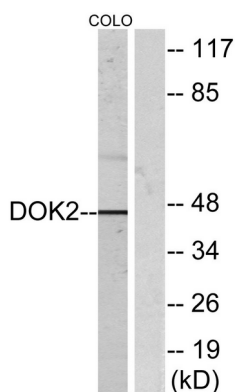
hematopoietic progenitors isolated from chronic myelogenous leukemia (CML) patients in the chronic phase. It may be a critical substrate for p210(bcr/abl), a chimeric protein whose presence is associated with CML. This encoded protein binds p120 (RasGAP) from CML cells. [provided by RefSeq, Jul 2008],domain:PTB domain mediates receptor interaction.,function:DOK proteins are enzymatically inert adaptor or scaffolding proteins. They provide a docking platform for the assembly of multimolecular signaling complexes. DOK2 may modulate the cellular proliferation induced by IL-4, as well as IL-2 and IL-3. May be involved in modulating Bcr-Abl signaling. Attenuates EGF-stimulated MAP kinase activation.,PTM:On immunoreceptor stimulation, phosphorylated on C-terminal tyrosine residues. Phosphorylation on Tyr-345 is required for binding to the SH2 domain of NCK. Phosphorylation on both Tyr-271 and Tyr-299 is required for interaction with RASGAP.,similarity:Belongs to the DOK family. Type A subfamily.,similarity:Contains 1 IRS-type PTB domain.,similarity:Contains 1 PH domain.,subunit:Interacts with phosphorylated RASGAP and EGFR. Interacts with RET and NCK.,tissue specificity:Highly expressed in peripheral blood leukocytes, lymph nodes and spleen. Lower expression in thymus, bone marrow and fetal liver.,

Research Area

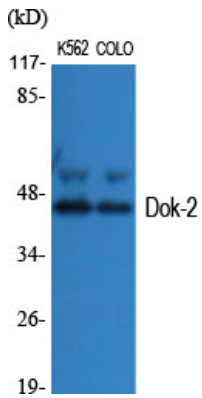
Image Data



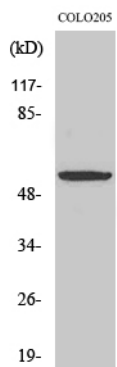
Immunohistochemistry analysis of paraffin-embedded human breast carcinoma tissue, using p56 Dok-2 Antibody. The picture on the right is blocked with the synthesized peptide.



Western blot analysis of lysates from COLO205, using p56 Dok-2 Antibody. The lane on the right is blocked with the synthesized peptide.



Western Blot analysis of various cells using Dok-2 Polyclonal Antibody



Western Blot analysis of COLO205 cells using Dok-2 Polyclonal Antibody