
Product Name: DOCK 180 Rabbit Polyclonal Antibody**Catalog #: APRab10100**

For research use only.

Summary

Description	Rabbit polyclonal Antibody
Host	Rabbit
Application	WB,ELISA
Reactivity	Human,Mouse
Conjugation	Unconjugated
Modification	Unmodified
Isotype	IgG
Clonality	Polyclonal
Form	Liquid
Concentration	1mg/ml
Storage	Aliquot and store at -20°C (valid for 12 months). Avoid freeze/thaw cycles.
Shipping	Ice bags
Buffer	Liquid in PBS containing 50% glycerol, 0.5% protective protein and 0.02% New type preservative N.
Purification	Affinity purification

Application

Dilution Ratio	WB 1:500-1:2000,ELISA 1:20000-1:40000
Molecular Weight	215kDa

Antigen Information

Gene Name	DOCK1
Alternative Names	DOCK1; Deducator of cytokinesis protein 1; 180 kDa protein downstream of CRK; DOCK180
Gene ID	1793.0
SwissProt ID	Q14185
Immunogen	The antiserum was produced against synthesized peptide derived from human DOCK1. AA range:1661-1710

Background

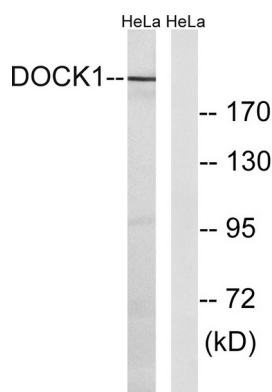
This gene encodes a member of the dedicator of cytokinesis protein family. Deducator of cytokinesis proteins act as guanine

nucleotide exchange factors for small Rho family G proteins. The encoded protein regulates the small GTPase Rac, thereby influencing several biological processes, including phagocytosis and cell migration. Overexpression of this gene has also been associated with certain cancers. Alternative splicing results in multiple transcript variants. [provided by RefSeq, Mar 2014],domain:The DHR-2 domain is necessary and sufficient for the GEF activity.,function:Involved in cytoskeletal rearrangements required for phagocytosis of apoptotic cells and cell motility. Functions as a guanine nucleotide exchange factor (GEF), which activates Rac Rho small GTPases by exchanging bound GDP for free GTP. Its GEF activity may be enhanced by ELMO1.,similarity:Belongs to the DOCK family.,similarity:Contains 1 DHR-1 (CZH-1) domain.,similarity:Contains 1 DHR-2 (CZH-2) domain.,similarity:Contains 1 SH3 domain.,subcellular location:Recruited to membranes via its interaction with phosphatidylinositol 3,4,5-triphosphate.,subunit:Interacts with the SH3 domains of CRK and NCK2 via multiple sites. Interacts with nucleotide-free RAC1 via its DHR-2 domain. Interacts with ELMO1, ELMO2 and probably ELMO3 via its SH3 domain. Interacts with RAC1 and BAI1.,tissue specificity:Highly expressed in placenta, lung, kidney, pancreas and ovary. Expressed at intermediate level in thymus, testes and colon.,

Research Area

Focal adhesion;Regulates Actin and Cytoskeleton;

Image Data



Western blot analysis of lysates from HeLa cells, using DOCK1 Antibody. The lane on the right is blocked with the synthesized peptide.