
Product Name: DnaJB4 Rabbit Polyclonal Antibody**Catalog #: APRab10069**

For research use only.

Summary

Description	Rabbit polyclonal Antibody
Host	Rabbit
Application	WB,IHC,ICC/IF,ELISA
Reactivity	Human,Mouse,Rat
Conjugation	Unconjugated
Modification	Unmodified
Isotype	IgG
Clonality	Polyclonal
Form	Liquid
Concentration	1mg/ml
Storage	Aliquot and store at -20°C (valid for 12 months). Avoid freeze/thaw cycles.
Shipping	Ice bags
Buffer	Liquid in PBS containing 50% glycerol, 0.5% protective protein and 0.02% New type preservative N.
Purification	Affinity purification

Application

Dilution Ratio	WB 1:500-1:2000,IHC 1:100-1:300,ICC/IF 1:50-1:200,ELISA 1:20000-1:40000
Molecular Weight	38kDa

Antigen Information

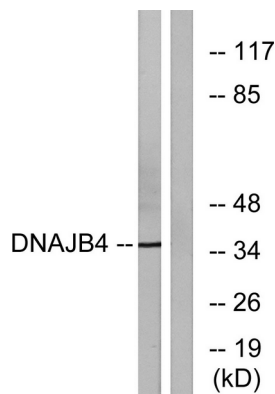
Gene Name	DNAJB4
Alternative Names	DNAJB4; DNAJW; HLJ1; DnaJ homolog subfamily B member 4; Heat shock 40 kDa protein 1 homolog; HSP40 homolog; Heat shock protein 40 homolog; Human liver DnaJ-like protein
Gene ID	11080.0
SwissProt ID	Q9UDY4
Immunogen	The antiserum was produced against synthesized peptide derived from human DNAJB4. AA range:91-140

Background

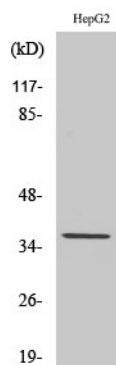
The protein encoded by this gene is a molecular chaperone, tumor suppressor, and member of the heat shock protein-40 family. The encoded protein binds the cell adhesion protein E-cadherin and targets it to the plasma membrane. This protein also binds incorrectly folded E-cadherin and targets it for endoplasmic reticulum-associated degradation. This gene is a strong tumor suppressor for colorectal carcinoma, and downregulation of it may serve as a good biomarker for predicting patient outcomes. Several transcript variants encoding different isoforms have been found for this gene. [provided by RefSeq, Nov 2015],induction:By heat shock.,similarity:Contains 1 J domain.,

Research Area

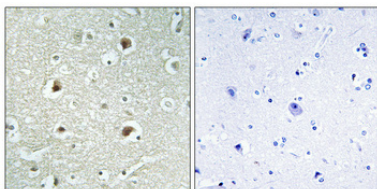
Image Data



Western blot analysis of lysates from HepG2 cells, using DNAJB4 Antibody. The lane on the right is blocked with the synthesized peptide.



Western Blot analysis of various cells using DnaJB4 Polyclonal Antibody



Immunohistochemical analysis of paraffin-embedded Human brain. Antibody was diluted at 1:100 (4°,overnight) . High-pressure and temperature Tris-EDTA,pH8.0 was used for antigen retrieval. Negative contrl (right) obtained from antibody was pre-absorbed by immunogen peptide.