
Product Name: DNA pol β Rabbit Polyclonal Antibody**Catalog #: APRab10054**

For research use only.

Summary

Description	Rabbit polyclonal Antibody
Host	Rabbit
Application	WB,IHC,ICC/IF,ELISA
Reactivity	Human,Mouse,Rat
Conjugation	Unconjugated
Modification	Unmodified
Isotype	IgG
Clonality	Polyclonal
Form	Liquid
Concentration	1mg/ml
Storage	Aliquot and store at -20°C (valid for 12 months). Avoid freeze/thaw cycles.
Shipping	Ice bags
Buffer	Liquid in PBS containing 50% glycerol, 0.5% protective protein and 0.02% New type preservative N.
Purification	Affinity purification

Application

Dilution Ratio	WB 1:500-1:2000,IHC 1:100-1:300,ICC/IF 1:50-1:200,ELISA 1:5000-1:20000
Molecular Weight	38kDa

Antigen Information

Gene Name	POLB
Alternative Names	POLB; DNA polymerase beta
Gene ID	5423.0
SwissProt ID	P06746
Immunogen	The antiserum was produced against synthesized peptide derived from human DNA Polymerase beta. AA range:286-335

Background

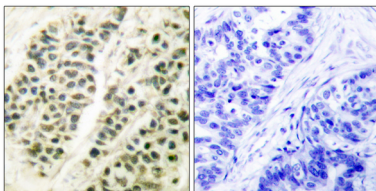
The protein encoded by this gene is a DNA polymerase involved in base excision and repair, also called gap-filling DNA

synthesis. The encoded protein, acting as a monomer, is normally found in the cytoplasm, but it translocates to the nucleus upon DNA damage. Several transcript variants of this gene exist, but the full-length nature of only one has been described to date. [provided by RefSeq, Sep 2011],catalytic activity:Deoxynucleoside triphosphate + DNA(n) = diphosphate + DNA(n+1),cofactor:Binds 2 magnesium ions per subunit.,domain:Residues 239-252 form a flexible loop which appears to affect the polymerase fidelity.,function:Repair polymerase. Conducts "gap-filling" DNA synthesis in a stepwise distributive fashion rather than in a processive fashion as for other DNA polymerases. Has a 5'-deoxyribose-5-phosphate lyase (dRP lyase) activity.,PTM:Methylation by PRMT6 stimulates the polymerase activity by enhancing DNA binding and processivity.,similarity:Belongs to the DNA polymerase type-X family.,subunit:Monomer.,

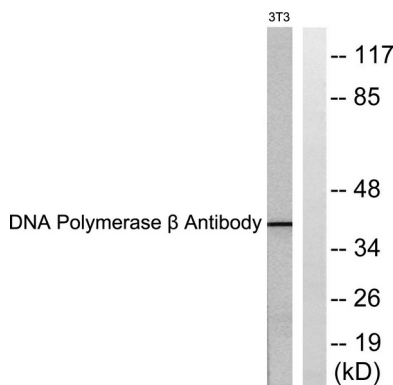
Research Area

Base excision repair;

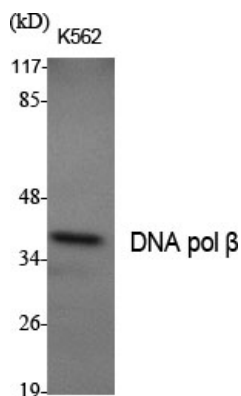
Image Data



Immunohistochemistry analysis of paraffin-embedded human breast carcinoma tissue, using DNA Polymerase beta Antibody. The picture on the right is blocked with the synthesized peptide.



Western blot analysis of lysates from NIH/3T3 cells, using DNA Polymerase beta Antibody. The lane on the right is blocked with the synthesized peptide.



Western Blot analysis of various cells using DNA pol beta Polyclonal Antibody

Western Blot analysis of K562 cells using DNA pol β Polyclonal Antibody

