
Product Name: Dlx-5 Rabbit Polyclonal Antibody**Catalog #: APRab10030**

For research use only.

Summary

Description	Rabbit polyclonal Antibody
Host	Rabbit
Application	WB,IHC,ICC/IF,ELISA
Reactivity	Human,Mouse,Rat
Conjugation	Unconjugated
Modification	Unmodified
Isotype	IgG
Clonality	Polyclonal
Form	Liquid
Concentration	1mg/ml
Storage	Aliquot and store at -20°C (valid for 12 months). Avoid freeze/thaw cycles.
Shipping	Ice bags
Buffer	Liquid in PBS containing 50% glycerol, 0.5% protective protein and 0.02% New type preservative N.
Purification	Affinity purification

Application

Dilution Ratio	WB 1:500-1:2000,IHC 1:100-1:300,ICC/IF 1:200-1:1000,ELISA 1:20000-1:40000
Molecular Weight	27kDa

Antigen Information

Gene Name	DLX5
Alternative Names	DLX5; Homeobox protein DLX-5
Gene ID	1749.0
SwissProt ID	P56178
Immunogen	The antiserum was produced against synthesized peptide derived from human DLX5. AA range:91-140

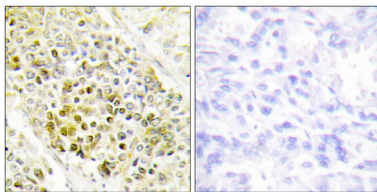
Background

This gene encodes a member of a homeobox transcription factor gene family similar to the Drosophila distal-less gene. The

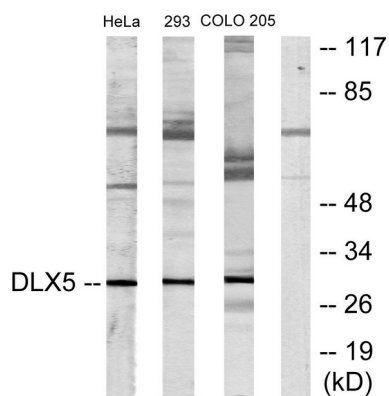
encoded protein may play a role in bone development and fracture healing. Mutation in this gene, which is located in a tail-to-tail configuration with another member of the family on the long arm of chromosome 7, may be associated with split-hand/split-foot malformation. [provided by RefSeq, Jul 2008],developmental stage:First expressed in embryos at 8.5-9 days in facial and branchial arch mesenchyme, otic vesicles and frontonasal ectoderm around olfactory placodes, a day later expression is seen in the developing forebrain in primordia of the ganglionic eminence and ventral diencephalic regions. In day 12.5 embryos, expressed in the brain and bones, and also in all skeletal structures of midgestation embryos after the first cartilage formation. Expression remains unaltered in both brain and skeleton in day 15 embryos and slowly decreases in day 17 embryos.,similarity:Belongs to the distal-less homeobox family.,similarity:Contains 1 homeobox DNA-binding domain.,subunit:Interacts with G22P1 (Ku70),.

Research Area

Image Data



Immunohistochemistry analysis of paraffin-embedded human lung carcinoma tissue, using DLX5 Antibody. The picture on the right is blocked with the synthesized peptide.



Western blot analysis of lysates from HeLa, 293, and COLO205 cells, using DLX5 Antibody. The lane on the right is blocked with the synthesized peptide.



Western Blot analysis of various cells using Dlx-5 Polyclonal Antibody diluted at 1:500