
Product Name: Dlx-2 Rabbit Polyclonal Antibody**Catalog #: APRab10025**

For research use only.

Summary

Description	Rabbit polyclonal Antibody
Host	Rabbit
Application	WB,ELISA
Reactivity	Human,Mouse,Rat
Conjugation	Unconjugated
Modification	Unmodified
Isotype	IgG
Clonality	Polyclonal
Form	Liquid
Concentration	1mg/ml
Storage	Aliquot and store at -20°C (valid for 12 months). Avoid freeze/thaw cycles.
Shipping	Ice bags
Buffer	Liquid in PBS containing 50% glycerol, 0.5% protective protein and 0.02% New type preservative N.
Purification	Affinity purification

Application

Dilution Ratio	WB 1:500-1:2000,ELISA 1:10000-1:20000
Molecular Weight	42kDa

Antigen Information

Gene Name	DLX2
Alternative Names	Homeobox protein DLX-2
Gene ID	1746.0
SwissProt ID	Q07687
Immunogen	Synthesized peptide derived from human Dlx-2. at AA range: 101-150

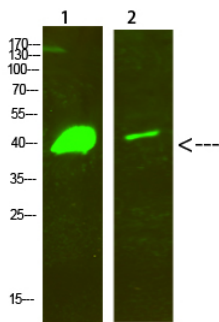
Background

Many vertebrate homeo box-containing genes have been identified on the basis of their sequence similarity with Drosophila developmental genes. Members of the Dlx gene family contain a homeobox that is related to that of Distal-less (Dll), a gene

expressed in the head and limbs of the developing fruit fly. The Distal-less (Dlx) family of genes comprises at least 6 different members, DLX1-DLX6. The DLX proteins are postulated to play a role in forebrain and craniofacial development. This gene is located in a tail-to-tail configuration with another member of the gene family on the long arm of chromosome 2. [provided by RefSeq, Jul 2008],function:Likely to play a regulatory role in the development of the ventral forebrain. May play a role in craniofacial patterning and morphogenesis.,similarity:Belongs to the distal-less homeobox family.,similarity:Contains 1 homeobox DNA-binding domain.,

Research Area

Image Data



Western Blot analysis of 1,hela 2,mouse-brain cells using Dlx-2 Rabbit Polyclonal Antibody diluted at 1:500 (4°C overnight) . Secondary antibody: Goat Anti-rabbit IgG IRDye 800 (diluted at 1:5000, 25°C, 1 hour)