

Summary

Production Name	Dkk-1 Rabbit Polyclonal Antibody
Description	Rabbit Polyclonal Antibody
Host	Rabbit
Application	WB,IHC-P,IF-P,IF-F,ICC/IF,ELISA
Reactivity	Human,Mouse,Rat

Performance

Conjugation	Unconjugated
Modification	Unmodified
Isotype	IgG
Clonality	Polyclonal
Form	Liquid
Storage	Store at 4°C short term. Aliquot and store at -20°C long term. Avoid freeze/thaw cycles.
Buffer	Liquid in PBS containing 50% glycerol, 0.5% protective protein and 0.02% New type preservative N.
Purification	Affinity purification

Immunogen

Gene Name	DKK1
Alternative Names	DKK1; Dickkopf-related protein 1; Dickkopf-1; Dkk-1; hDkk-1; SK
Gene ID	22943.0
SwissProt ID	O94907.The antiserum was produced against synthesized peptide derived from the C-terminal region of human DKK1. AA range:181-230

Application

Dilution Ratio	WB 1:500-1:2000, IHC-P 1:100-1:300, ELISA 1:10000, IF-P/IF-F/ICC/IF 1:50-200
Molecular Weight	29kDa

Product Name: Dkk-1 Rabbit Polyclonal Antibody
Catalog #: APRab10003



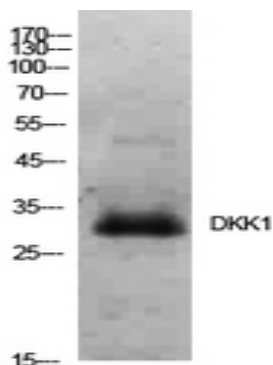
Background

This gene encodes a protein that is a member of the dickkopf family. It is a secreted protein with two cysteine rich regions and is involved in embryonic development through its inhibition of the WNT signaling pathway. Elevated levels of DKK1 in bone marrow plasma and peripheral blood is associated with the presence of osteolytic bone lesions in patients with multiple myeloma. [provided by RefSeq, Jul 2008],function:Inhibitor of Wnt signaling pathway, similarity:Belongs to the dickkopf family, tissue specificity:Placenta.,

Research Area

WNT;WNT-T CELL

Image Data



Western Blot analysis of HeLa cells using Dkk-1 Polyclonal Antibody.. Secondary antibody was diluted at 1:20000



Immunohistochemical analysis of paraffin-embedded human-brain, antibody was diluted at 1:100

Note

For research use only.