

Product Name: DJ-1 Rabbit Polyclonal Antibody**Catalog #: APRab09996**

For research use only.

Summary

Description	Rabbit polyclonal Antibody
Host	Rabbit
Application	WB,IHC,ICC/IF,ELISA
Reactivity	Human,Mouse,Rat
Conjugation	Unconjugated
Modification	Unmodified
Isotype	IgG
Clonality	Polyclonal
Form	Liquid
Concentration	1mg/ml
Storage	Aliquot and store at -20°C (valid for 12 months). Avoid freeze/thaw cycles.
Shipping	Ice bags
Buffer	Liquid in PBS containing 50% glycerol, 0.5% protective protein and 0.02% New type preservative N.
Purification	Affinity purification

Application

Dilution Ratio	WB 1:500-1:2000,IHC 1:100-1:300,ICC/IF 1:50-1:200,ELISA 1:10000-1:20000
Molecular Weight	20kDa

Antigen Information

Gene Name	PARK7
Alternative Names	PARK7; Protein DJ-1; Oncogene DJ1; Parkinson disease protein 7
Gene ID	11315.0
SwissProt ID	Q99497
Immunogen	The antiserum was produced against synthesized peptide derived from human PARK7. AA range:61-110

Background

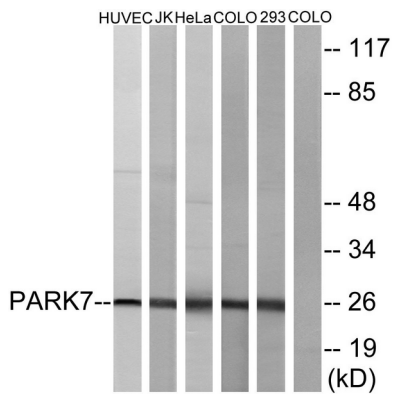
The product of this gene belongs to the peptidase C56 family of proteins. It acts as a positive regulator of androgen receptor-

dependent transcription. It may also function as a redox-sensitive chaperone, as a sensor for oxidative stress, and it apparently protects neurons against oxidative stress and cell death. Defects in this gene are the cause of autosomal recessive early-onset Parkinson disease 7. Two transcript variants encoding the same protein have been identified for this gene. [provided by RefSeq, Jul 2008],disease:Defects in PARK7 are the cause of autosomal recessive early-onset Parkinson disease 7 (PARK7) [MIM:606324, 168600]. Parkinson disease (PD) is a complex, multifactorial disorder that typically manifests after the age of 50 years, although early-onset cases (before 50 years) are known. PD generally arises as a sporadic condition but is occasionally inherited as a simple mendelian trait. Although sporadic and familial PD are very similar, inherited forms of the disease usually begin at earlier ages and are associated with atypical clinical features. PD is characterized by bradykinesia, resting tremor, muscular rigidity and postural instability, as well as by a clinically significant response to treatment with levodopa. The pathology involves the loss of dopaminergic neurons in the substantia nigra and the presence of Lewy bodies (intraneuronal accumulations of aggregated proteins), in surviving neurons in various areas of the brain. PARK7 is characterized by onset before 40 years, slow progression and initial good response to levodopa.,disease:Defects in PARK7 influences susceptibility to amyotrophic lateral sclerosis-parkinsonism/dementia complex type 2 [MIM:105500]; also called amyotrophic lateral sclerosis-parkinsonism/dementia complex of Guam or Guam disease. Amyotrophic lateral sclerosis-parkinsonism/dementia complex type 2 is a neurodegenerative disorder with unusually high incidence among the Chamorro people of the Western Pacific Islands of Guam. Both amyotrophic lateral sclerosis and parkinsonism-dementia are chronic, progressive, and uniformly fatal disorders in this population. Both diseases are known to occur in the same kindred, the same sibship, and even the same individual.,function:Acts as a positive regulator of androgen receptor-dependent transcription. May function as a redox-sensitive chaperone and as a sensor for oxidative stress. Prevents aggregation of SNCA. Protects neurons against oxidative stress and cell death. Plays a role in fertilization. Has no proteolytic activity. Has cell-growth promoting activity and transforming activity.,induction:By ultraviolet irradiation.,miscellaneous:Cys-106 is easily oxidized to sulfinic acid.,online information:The Singapore human mutation and polymorphism database,PTM:Sumoylated on Lys-130 by PIAS2 or PIAS4; which is enhanced after ultraviolet irradiation and essential for cell-growth promoting activity and transforming activity.,similarity:Belongs to the peptidase C56 family.,subcellular location:Associated with mitochondria in some cells, particularly after oxidative stress. Detected in tau inclusions in brains from neurodegenerative disease patients.,subunit:Homodimer. Binds EFCAB6/DJBP and PIAS2. Part of a ternary complex containing PARK7, EFCAB6/DJBP and AR.,tissue specificity:Highly expressed in pancreas, kidney, skeletal muscle, liver, testis and heart. Detected at slightly lower levels in placenta and brain. Detected in astrocytes, Sertoli cells, spermatogonia, spermatids and spermatozoa.,

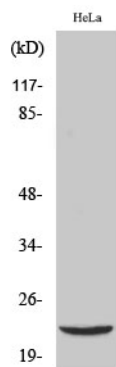
Research Area

Parkinson's disease;

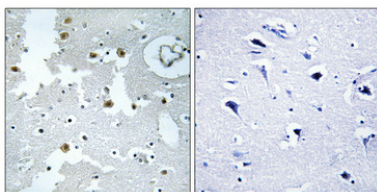
Image Data



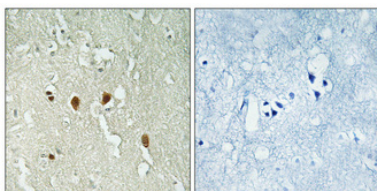
Western blot analysis of lysates from HUVEC, JurKat, HeLa, COLO205, and 293 cells, using PARK7 Antibody. The lane on the right is blocked with the synthesized peptide.



Western Blot analysis of various cells using DJ-1 Polyclonal Antibody



Immunohistochemical analysis of paraffin-embedded Human brain. Antibody was diluted at 1:100 (4°, overnight). High-pressure and temperature Tris-EDTA, pH 8.0 was used for antigen retrieval. Negative control (right) obtained from antibody was pre-absorbed by immunogen peptide.



Immunohistochemical analysis of paraffin-embedded Human brain. Antibody was diluted at 1:100 (4°, overnight). High-pressure and temperature Tris-EDTA, pH 8.0 was used for antigen retrieval. Negative control (right) obtained from antibody was pre-absorbed by immunogen peptide.