

---

**Product Name: DHRS4 Rabbit Polyclonal Antibody****Catalog #: APRab09971**

For research use only.

**Summary**

|                      |   |
|----------------------|---|
| <b>Description</b>   | Rabbit polyclonal Antibody  |
| <b>Host</b>          | Rabbit  |
| <b>Application</b>   | WB,IHC,ICC/IF,ELISA   |
| <b>Reactivity</b>    | Human,Rat,Mouse   |
| <b>Conjugation</b>   | Unconjugated  |
| <b>Modification</b>  | Unmodified  |
| <b>Isotype</b>       | IgG   |
| <b>Clonality</b>     | Polyclonal  |
| <b>Form</b>          | Liquid  |
| <b>Concentration</b> | 1mg/ml  |
| <b>Storage</b>       | Aliquot and store at -20°C (valid for 12 months). Avoid freeze/thaw cycles.                       |
| <b>Shipping</b>      | Ice bags  |
| <b>Buffer</b>        | Liquid in PBS containing 50% glycerol, 0.5% protective protein and 0.02% New type preservative N. |
| <b>Purification</b>  | Affinity purification   |

**Application**

|                         |   |
|-------------------------|---|
| <b>Dilution Ratio</b>   | WB 1:500-1:2000,IHC 1:100-1:300,ICC/IF 1:50-1:200,ELISA 1:20000-1:40000 |
| <b>Molecular Weight</b> | 32-34kDa  |

**Antigen Information**

|                          |  |
|--------------------------|--|
| <b>Gene Name</b>         | DHRS4  |
| <b>Alternative Names</b> | DHRS4; Dehydrogenase/reductase SDR family member 4; NADPH-dependent carbonyl reductase/NADP-retinol dehydrogenase; CR; PHCR; NADPH-dependent retinol dehydrogenase/reductase; NRDR; humNRDR; Peroxisomal short-chain alcohol dehydrogenase; PSCD |
| <b>Gene ID</b>           | 10901.0  |
| <b>SwissProt ID</b>      | Q9BTZ2   |
| <b>Immunogen</b>         | The antiserum was produced against synthesized peptide derived from human DHRS4. AA range:191-240  |

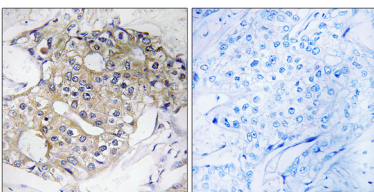
## Background

catalytic activity:  $R-CHOH-R' + NADP(+) = R-CO-R' + NADPH$ , function: Reduces all-trans-retinal and 9-cis retinal. Can also catalyze the oxidation of all-trans-retinol with NADP as co-factor, but with much lower efficiency. Reduces alkyl phenyl ketones and alpha-dicarbonyl compounds with aromatic rings, such as pyrimidine-4-aldehyde, 3-benzoylpyridine, 4-benzoylpyridine, menadione and 4-hexanoylpyridine. Has no activity towards aliphatic aldehydes and ketones., miscellaneous: Inhibited by kaempferol, quercetin, genistein and myristic acid., similarity: Belongs to the short-chain dehydrogenases/reductases (SDR) family., subcellular location: Isoform 1 is peroxisomal, while isoform 4 is not., subunit: Homotetramer., tissue specificity: Isoform 1 is predominantly expressed in normal cervix (at protein level). Isoform 4 is expressed in some neoplastic cervical tissues, but not in normal cervix (at protein level). Isoforms 5 and 6 are expressed in a few neoplastic cervical tissues., catalytic activity:  $R-CHOH-R' + NADP(+) = R-CO-R' + NADPH$ , function: Reduces all-trans-retinal and 9-cis retinal. Can also catalyze the oxidation of all-trans-retinol with NADP as co-factor, but with much lower efficiency. Reduces alkyl phenyl ketones and alpha-dicarbonyl compounds with aromatic rings, such as pyrimidine-4-aldehyde, 3-benzoylpyridine, 4-benzoylpyridine, menadione and 4-hexanoylpyridine. Has no activity towards aliphatic aldehydes and ketones., miscellaneous: Inhibited by kaempferol, quercetin, genistein and myristic acid., similarity: Belongs to the short-chain dehydrogenases/reductases (SDR) family., subcellular location: Isoform 1 is peroxisomal, while isoform 4 is not., subunit: Homotetramer., tissue specificity: Isoform 1 is predominantly expressed in normal cervix (at protein level). Isoform 4 is expressed in some neoplastic cervical tissues, but not in normal cervix (at protein level). Isoforms 5 and 6 are expressed in a few neoplastic cervical tissues.,

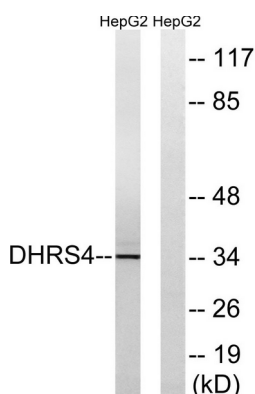
## Research Area

Retinol metabolism;

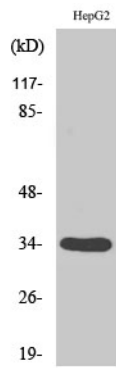
## Image Data



Immunohistochemistry analysis of paraffin-embedded human breast carcinoma tissue, using DHRS4 Antibody. The picture on the right is blocked with the synthesized peptide.



Western blot analysis of lysates from HepG2 cells, using DHRS4 Antibody. The lane on the right is blocked with the synthesized peptide.



Western Blot analysis of various cells using DHRS4 Polyclonal Antibody diluted at 1 : 2000