
Product Name: DHRS11 Rabbit Polyclonal Antibody**Catalog #: APRab09969**

For research use only.

Summary

Description	Rabbit polyclonal Antibody
Host	Rabbit
Application	WB,IHC,ICC/IF,ELISA
Reactivity	Human,Mouse
Conjugation	Unconjugated
Modification	Unmodified
Isotype	IgG
Clonality	Polyclonal
Form	Liquid
Concentration	1mg/ml
Storage	Aliquot and store at -20°C (valid for 12 months). Avoid freeze/thaw cycles.
Shipping	Ice bags
Buffer	Liquid in PBS containing 50% glycerol, 0.5% protective protein and 0.02% New type preservative N.
Purification	Affinity purification

Application

Dilution Ratio WB 1:500-1:2000,IHC 1:100-1:300,ICC/IF 1:50-1:200,ELISA 1:10000-1:20000

Molecular Weight

Antigen Information

Gene Name	DHRS11
Alternative Names	DHRS11; Dehydrogenase/reductase SDR family member 11
Gene ID	79154.0
SwissProt ID	Q6UWP2
Immunogen	The antiserum was produced against synthesized peptide derived from human DHRS11. AA range:111-160

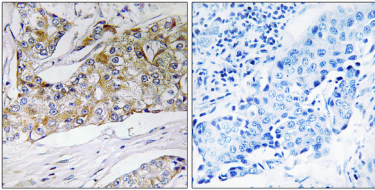
Background

similarity:Belongs to the short-chain dehydrogenases/reductases (SDR) family.,subunit:Homotetramer.,similarity:Belongs to

the short-chain dehydrogenases/reductases (SDR) family.,subunit:Homotetramer.,

Research Area

Image Data



Immunohistochemistry analysis of paraffin-embedded human breast carcinoma tissue, using DHR11 Antibody. The picture on the right is blocked with the synthesized peptide.