

Product Name: DGK-ι Rabbit Polyclonal Antibody**Catalog #: APRab09953**

For research use only.

Summary

Description	Rabbit polyclonal Antibody
Host	Rabbit
Application	WB,IHC,ICC/IF,ELISA
Reactivity	Human,Rat
Conjugation	Unconjugated
Modification	Unmodified
Isotype	IgG
Clonality	Polyclonal
Form	Liquid
Concentration	1mg/ml
Storage	Aliquot and store at -20°C (valid for 12 months). Avoid freeze/thaw cycles.
Shipping	Ice bags
Buffer	Liquid in PBS containing 50% glycerol, 0.5% protective protein and 0.02% New type preservative N.
Purification	Affinity purification

Application

Dilution Ratio	WB 1:500-1:2000,IHC 1:100-1:300,ICC/IF 1:200-1:1000,ELISA 1:10000-1:20000
Molecular Weight	160kDa

Antigen Information

Gene Name	DGKI
Alternative Names	DGKI; Diacylglycerol kinase iota; DAG kinase iota; Diglyceride kinase iota; DGK-iota
Gene ID	9162.0
SwissProt ID	O75912
Immunogen	The antiserum was produced against synthesized peptide derived from human DGKI. AA range:991-1040

Background

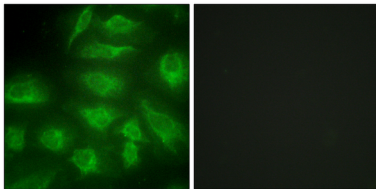
This gene is a member of the type IV diacylglycerol kinase subfamily. Diacylglycerol kinases regulate the intracellular

concentration of diacylglycerol through its phosphorylation, producing phosphatidic acid. The specific role of the enzyme encoded by this gene is undetermined, however, it may play a crucial role in the production of phosphatidic acid in the retina or in recessive forms of retinal degeneration. [provided by RefSeq, Jul 2008],catalytic activity:ATP + 1,2-diacylglycerol = ADP + 1,2-diacyl-sn-glycerol 3-phosphate.,similarity:Belongs to the eukaryotic diacylglycerol kinase family.,similarity:Contains 1 DAGKc domain.,similarity:Contains 2 ANK repeats.,similarity:Contains 2 phorbol-ester/DAG-type zinc fingers.,

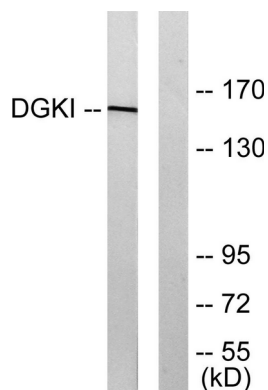
Research Area

Glycerolipid metabolism;Glycerophospholipid metabolism;Phosphatidylinositol signaling system;

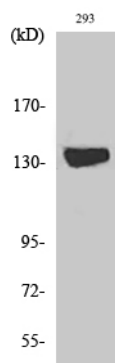
Image Data



Immunofluorescence analysis of HeLa cells, using DGKI Antibody. The picture on the right is blocked with the synthesized peptide.



Western blot analysis of lysates from 293 cells, using DGKI Antibody. The lane on the right is blocked with the synthesized peptide.



Western Blot analysis of various cells using DGK- ι Polyclonal Antibody diluted at 1:1000