
Product Name: DGAT2L3 Rabbit Polyclonal Antibody**Catalog #: APRab09939**

For research use only.

Summary

Description	Rabbit polyclonal Antibody
Host	Rabbit
Application	WB,ELISA
Reactivity	Human,Rat,Mouse
Conjugation	Unconjugated
Modification	Unmodified
Isotype	IgG
Clonality	Polyclonal
Form	Liquid
Concentration	1mg/ml
Storage	Aliquot and store at -20°C (valid for 12 months). Avoid freeze/thaw cycles.
Shipping	Ice bags
Buffer	Liquid in PBS containing 50% glycerol, 0.5% protective protein and 0.02% New type preservative N.
Purification	Affinity purification

Application

Dilution Ratio	WB 1:500-1:2000,ELISA 1:5000-1:10000
Molecular Weight	39kDa

Antigen Information

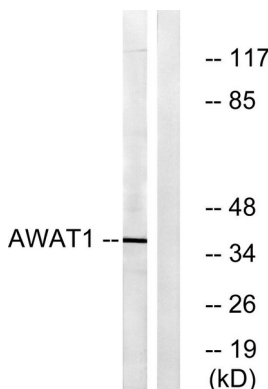
Gene Name	AWAT1
Alternative Names	AWAT1; DGA2; DGAT2L3; Acyl-CoA wax alcohol acyltransferase 1; Diacylglycerol O-acyltransferase 2-like protein 3; Diacylglycerol acyltransferase 2; Long-chain-alcohol O-fatty-acyltransferase 1
Gene ID	158833.0
SwissProt ID	Q58HT5
Immunogen	The antiserum was produced against synthesized peptide derived from human AWAT1. AA range:261-310

Background

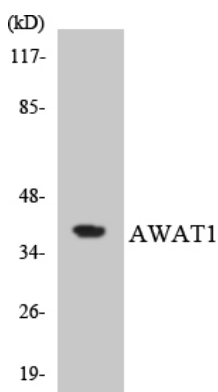
The protein encoded by this gene belongs to the diacylglycerol acyltransferase family. It esterifies long chain (wax) alcohols with acyl-CoA-derived fatty acids to produce wax esters. Wax esters are enriched in sebum, suggesting that this enzyme plays a central role in lipid metabolism in skin. Consistent with this observation, this protein is predominantly expressed in the sebaceous gland of the skin. [provided by RefSeq, Sep 2009],catalytic activity:Acyl-CoA + a long-chain alcohol = CoA + a long-chain ester.,function:Acyltransferase that predominantly esterify long chain (wax) alcohols with acyl-CoA-derived fatty acids to produce wax esters. Wax esters are enriched in sebum, suggesting that it plays a central role in lipid metabolism in skin. Has a preference for arachidyl alcohol as well as decyl alcohol, demonstrating its relatively poor activity using saturated long chain alcohols (C16, C18, and C20),similarity:Belongs to the diacylglycerol acyltransferase family.,tissue specificity:Predominantly expressed in skin, where it is limited to the sebaceous gland. Expressed in more mature, centrally located cells just before their rupture and sebum release. Also expressed in all tissues except spleen. Expressed at higher level in thymus, prostate and testis.,

Research Area

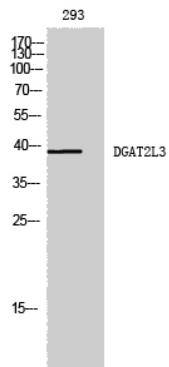
Image Data



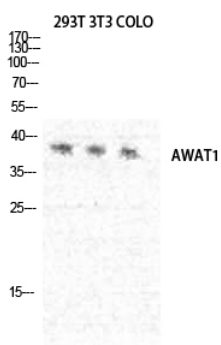
Western blot analysis of lysates from 293 cells, using AWAT1 Antibody. The lane on the right is blocked with the synthesized peptide.



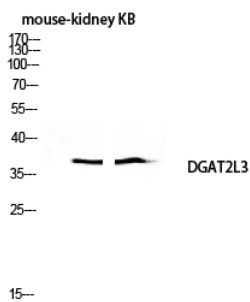
Western blot analysis of the lysates from HT-29 cells using AWAT1 antibody.



Western Blot analysis of 293 cells using DGAT2L3 Polyclonal Antibody diluted at 1:1000



Western Blot analysis of 293T NIH-3T3 COLO cells using DGAT2L3 Polyclonal Antibody diluted at 1:1000



Western blot analysis of mouse-kidney KB lysis using DGAT2L3 antibody. Antibody was diluted at 1:1000