
Product Name: DEF-3 Rabbit Polyclonal Antibody**Catalog #: APRab09900**

For research use only.

Summary

Description	Rabbit polyclonal Antibody
Host	Rabbit
Application	WB,IHC,ICC/IF,ELISA
Reactivity	Human,Mouse
Conjugation	Unconjugated
Modification	Unmodified
Isotype	IgG
Clonality	Polyclonal
Form	Liquid
Concentration	1mg/ml
Storage	Aliquot and store at -20°C (valid for 12 months). Avoid freeze/thaw cycles.
Shipping	Ice bags
Buffer	Liquid in PBS containing 50% glycerol, 0.5% protective protein and 0.02% New type preservative N.
Purification	Affinity purification

Application

Dilution Ratio	WB 1:500-1:2000,IHC 1:100-1:300,ICC/IF 1:200-1:1000,ELISA 1:10000-1:20000
Molecular Weight	150kDa

Antigen Information

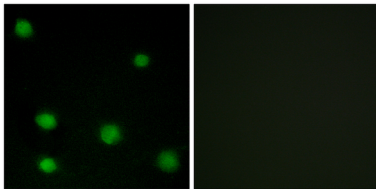
Gene Name	RBM6
Alternative Names	RBM6; DEF3; RNA-binding protein 6; Lung cancer antigen NY-LU-12; Protein G16; RNA-binding motif protein 6; RNA-binding protein DEF-3
Gene ID	10180.0
SwissProt ID	P78332
Immunogen	The antiserum was produced against synthesized peptide derived from human RBM6. AA range:991-1040

Background

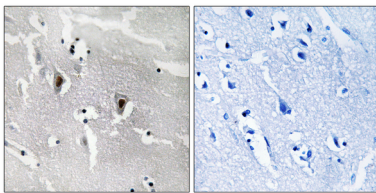
disease:Defects in RBM6 are found in non-small cell lung cancer (NSCLC) cell lines.,function:Specifically binds poly(G) RNA homopolymers in vitro.,PTM:Phosphorylated upon DNA damage, probably by ATM or ATR.,similarity:Contains 1 G-patch domain.,similarity:Contains 1 RRM (RNA recognition motif) domain.,tissue specificity:Ubiquitous in adults.,disease:Defects in RBM6 are found in non-small cell lung cancer (NSCLC) cell lines.,function:Specifically binds poly(G) RNA homopolymers in vitro.,PTM:Phosphorylated upon DNA damage, probably by ATM or ATR.,similarity:Contains 1 G-patch domain.,similarity:Contains 1 RRM (RNA recognition motif) domain.,tissue specificity:Ubiquitous in adults.,

Research Area

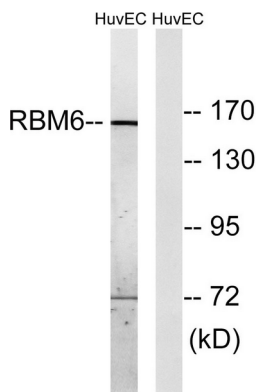
Image Data



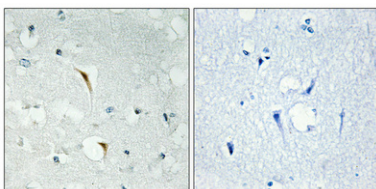
Immunofluorescence analysis of COS7 cells, using RBM6 Antibody. The picture on the right is blocked with the synthesized peptide.



Immunohistochemistry analysis of paraffin-embedded human brain tissue, using RBM6 Antibody. The picture on the right is blocked with the synthesized peptide.



Western blot analysis of lysates from HUVEC cells, using RBM6 Antibody. The lane on the right is blocked with the synthesized peptide.



Immunohistochemical analysis of paraffin-embedded Human brain. Antibody was diluted at 1:100 (4°,overnight) . High-pressure and temperature Tris-EDTA,pH8.0 was used for antigen retrieval. Negative contrl (right) obtained from antibody was pre-absorbed by immunogen peptide.