

Product Name: DDX52 Rabbit Polyclonal Antibody**Catalog #: APRab09888**

For research use only.

Summary

Description	Rabbit polyclonal Antibody
Host	Rabbit
Application	WB,IHC,ICC/IF,ELISA
Reactivity	Human,Rat,Mouse
Conjugation	Unconjugated
Modification	Unmodified
Isotype	IgG
Clonality	Polyclonal
Form	Liquid
Concentration	1mg/ml
Storage	Aliquot and store at -20°C (valid for 12 months). Avoid freeze/thaw cycles.
Shipping	Ice bags
Buffer	Liquid in PBS containing 50% glycerol, 0.5% protective protein and 0.02% New type preservative N.
Purification	Affinity purification

Application

Dilution Ratio	WB 1:500-1:2000,IHC 1:100-1:300,ICC/IF 1:50-1:200,ELISA 1:20000-1:40000
Molecular Weight	67kDa

Antigen Information

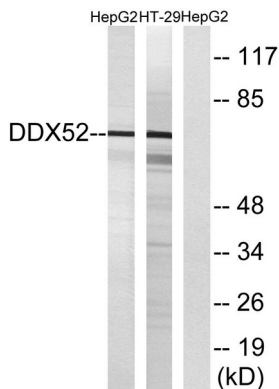
Gene Name	DDX52
Alternative Names	DDX52; ROK1; HUSSY-19; Probable ATP-dependent RNA helicase DDX52; ATP-dependent RNA helicase ROK1-like; DEAD box protein 52
Gene ID	11056.0
SwissProt ID	Q9Y2R4
Immunogen	The antiserum was produced against synthesized peptide derived from human DDX52. AA range:550-599

Background

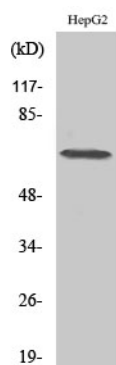
caution:The sequence shown here is derived from an Ensembl automatic analysis pipeline and should be considered as preliminary data.,PTM:Phosphorylated upon DNA damage, probably by ATM or ATR.,sequence caution:Several sequencing problems.,similarity:Belongs to the DEAD box helicase family. DDX52/ROK1 subfamily.,similarity:Contains 1 helicase ATP-binding domain.,similarity:Contains 1 helicase C-terminal domain.,caution:The sequence shown here is derived from an Ensembl automatic analysis pipeline and should be considered as preliminary data.,PTM:Phosphorylated upon DNA damage, probably by ATM or ATR.,sequence caution:Several sequencing problems.,similarity:Belongs to the DEAD box helicase family. DDX52/ROK1 subfamily.,similarity:Contains 1 helicase ATP-binding domain.,similarity:Contains 1 helicase C-terminal domain.,

Research Area

Image Data



Western blot analysis of lysates from HepG2 and HT-29 cells, using DDX52 Antibody. The lane on the right is blocked with the synthesized peptide.



Western Blot analysis of various cells using DDX52 Polyclonal Antibody diluted at 1 : 500 cells nucleus extracted by Minute TM Cytoplasmic and Nuclear Fractionation kit (SC-003, Invent biotech, MN, USA) .